

Ai Tong School
P3 Science
2025 Term 1 Review

Name: _____ ()

Class: 3 _____

Date: _____

Marks: _____ /15

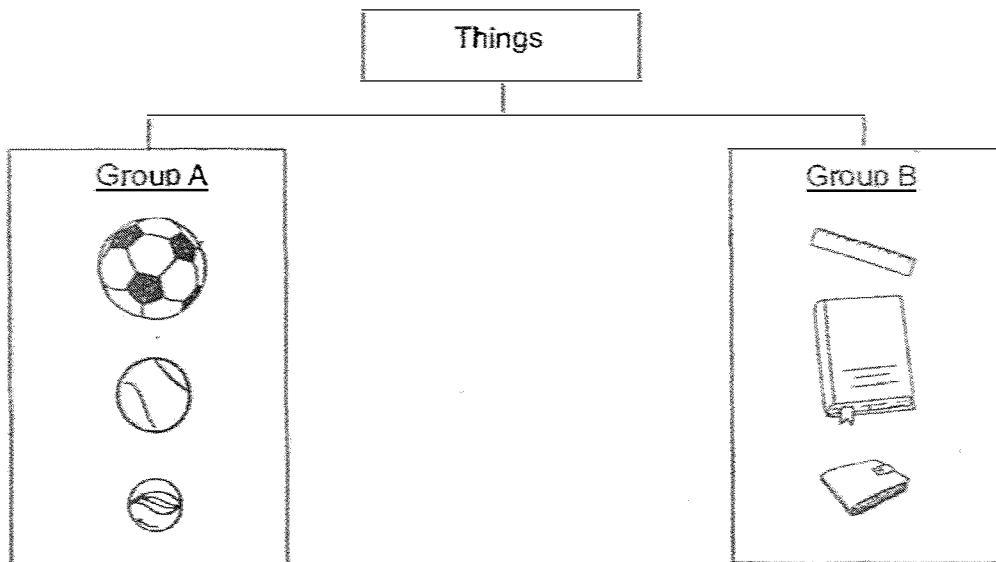
Duration: 20 minutes

Parent's Signature: _____

Section A (10 marks)

For each question from 1 to 4, four options are given. One of them is the correct answer. Make your choice (1, 2, 3 or 4) and write your answer in the bracket provided.

- 1 The classification diagram below shows how two different sets of things are grouped.



How are the things classified?

- (1) According to their sizes.
- (2) According to their colours.
- (3) According to their shapes.
- (4) According to their patterns.

()

(Go on to the next page)

- 2 A millipede curls up into a spiral when it is touched. Which characteristic of living things explains the millipede behaviour?

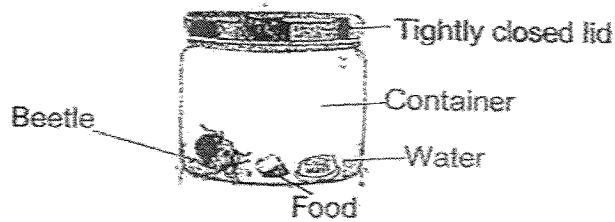


When touched.

- (1) Living things need air.
- (2) Living things can grow.
- (3) Living things can reproduce.
- (4) Living things respond to changes.

()

- 3 Anders kept a beetle in a tightly closed container with food and water as shown below.



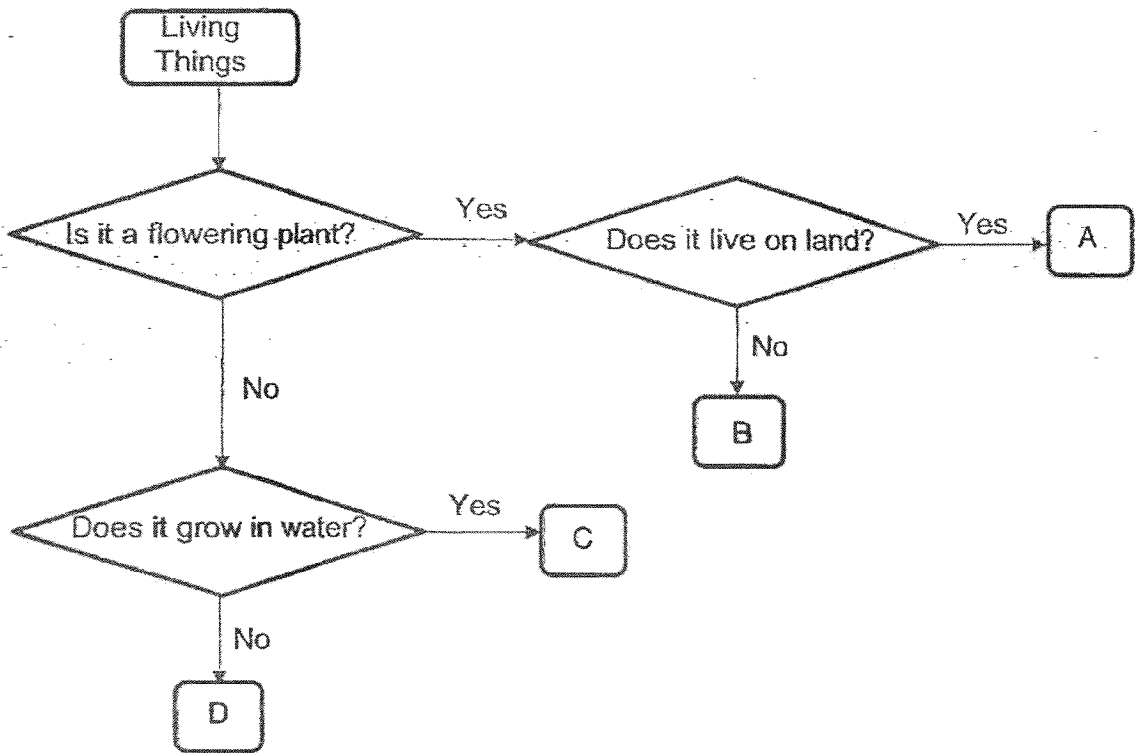
Anders' sister told him that the beetle would not be able to survive. What must Anders do to allow the beetle to survive?

- (1) Provide it with more food.
- (2) Provide it with more water.
- (3) Keep the container in a dark room.
- (4) Poke some holes on the tightly closed lid.

()

(Go on to the next page

- 4 Based on the flow chart below, which letters represent bird's nest fern and papaya plant?

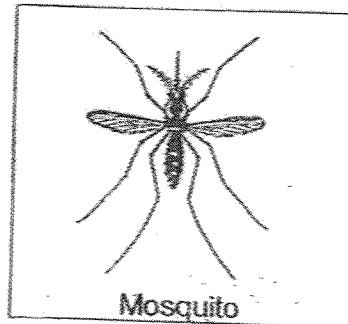
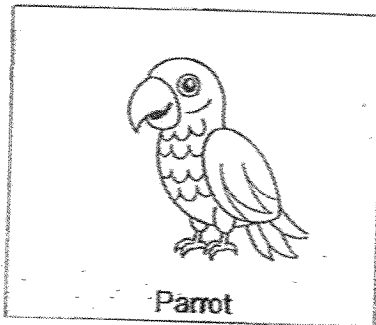


	Bird's nest fern	Papaya plant
(1)	C	D
(2)	D	A
(3)	A	B
(4)	B	A

()

(Go on to the next page)

5 Study the animals below.



Based on the information given, how are the animals similar?

- (1) They have wings.
- (2) They have feathers.
- (3) They make their own food.
- (4) They have the same number of legs.

()

(Go on to the next page)

Section B (5 marks)

For questions 6 and 7, write your answers in the spaces provided.

The number of marks available is shown in bracket [] at the end of each question or part question.

6 Study the table given below. The table shows the characteristics displayed by four things, A, B, C and D.

Thing	can make noise	can move	can grow	responds to changes	makes their own food
A	✓	✓	✓	✓	
B	✓	✓			
C		✓			
D			✓	✓	✓

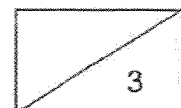
(a) Classify A, B, C and D in the table below.

[2]

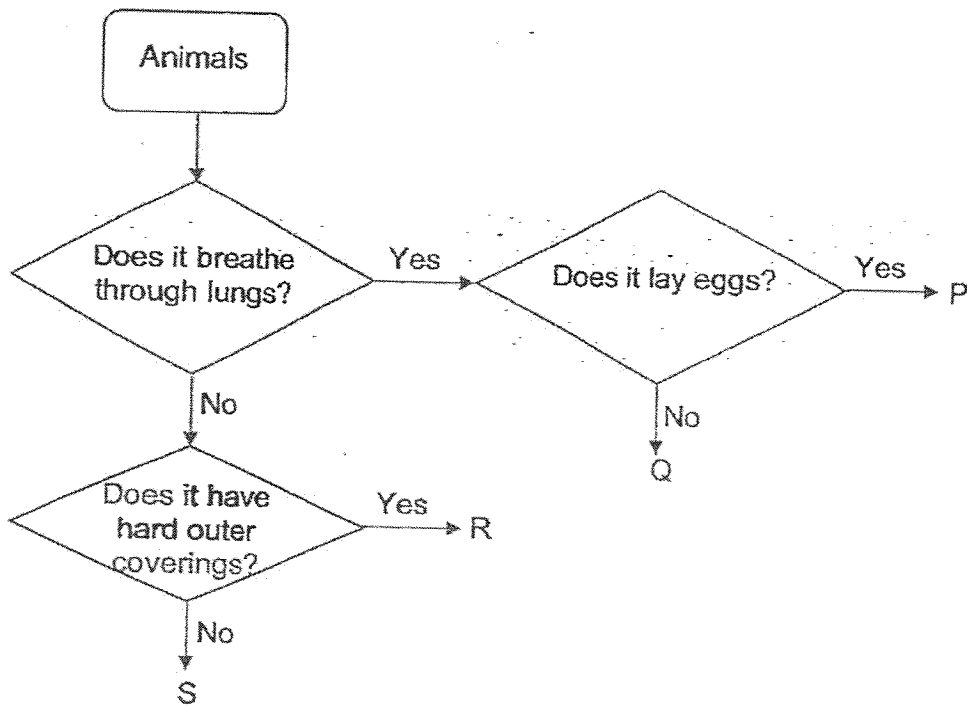
Living Things	Non-Living Things

(b) Which thing, A, B, C or D is likely to be a plant? Give a reason for your answer.

[1]

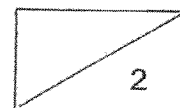


7 Study the flow chart below carefully.



(a) Based on the flow chart above, which group, P, Q, R or S best represents the snake? [1]

(b) State one similarity between animals in group P and Q. [1]



End of Paper

SCHOOL : AI TONG PRIMARY SCHOOL
LEVEL : PRIMARY 3
SUBJECT : SCIENCE
TERM : 2025 WEIGHTED ASSESSMENT 1

Q1	Q2	Q3	Q4	Q5					
3	4	4	2	1					

Q6a	Living things: A & D Non-living things: C & D B
Q6b	D should be a plant as plant cannot make noise, cannot move but it can grow and respond can make its own food.
Q7a	Animal P is a snake because it can breathe through lungs and can lay eggs.
Q7b	Animal P and Q can breathe through lungs.

www.sgexam.com