



MAHA BODHI SCHOOL
2025 SCIENCE REVIEW 1
PRIMARY THREE

Name : _____ ()

Date : 9 May 2025

Class : Primary 3 _____

Duration : 40 min

Marks :

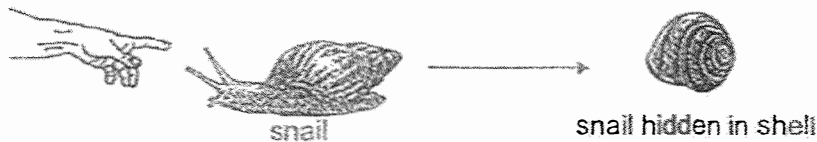
/ 30

Parent's signature : _____

Section A : [8 x 2 marks = 16 marks]

For each question from 1 to 8, four options are given. One of them is the correct answer. Make your choice (1, 2, 3 or 4). Write your answer in the bracket.

1. Jack touched a snail and observed that the snail went back into its shell as shown below.



Based on his observation above, which characteristics of living things did the snail show?

- (1) Living things grow. X
 - (2) Living things reproduce.
 - (3) Living things respond to changes.
 - (4) Living things need air, food and water to survive. ()
2. Which statement about all plants is true?
- (1) Plants cannot live in water.
 - (2) Plants need food to survive.
 - (3) Plants have green leaves.
 - (4) Plants reproduce by seeds. ()

Marks :

/ 4

3. Molly made the following statements about an animal.

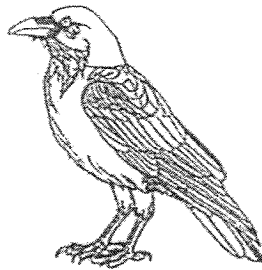
- It has scales.
- It has four legs.
- It lays eggs on land.
- It can swim well in the water.

Based on her observations above, which animal group does the animal belong to?

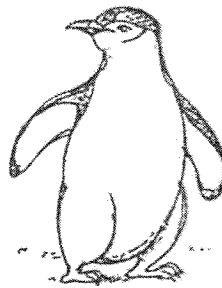
- (1) fish
- (2) reptile
- (3) mammal
- (4) amphibian

()

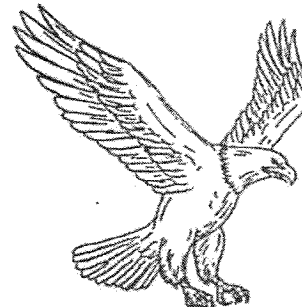
4. Study the animals below



crow



penguin



eagle

Which statement about the animals shown above is false?

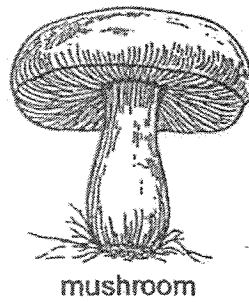
- (1) They can fly.
- (2) They lay eggs.
- (3) They have wings.
- (4) They have beaks.

()

Marks :

-	/ 4
---	-----

5. Study the diagram below.

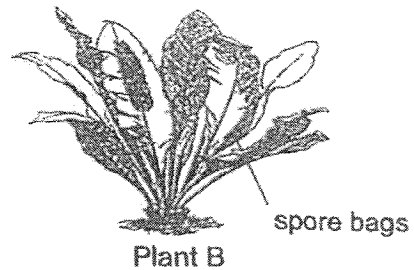
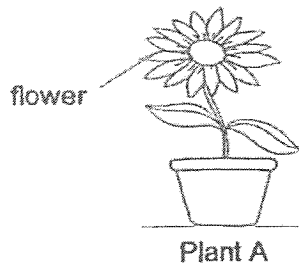


Which group of living things does the mushroom belong to?

- (1) fungi
- (2) plants
- (3) animals
- (4) bacteria

()

6. Study the diagrams of plants A and B.



Which statement is true about plants A and B above?

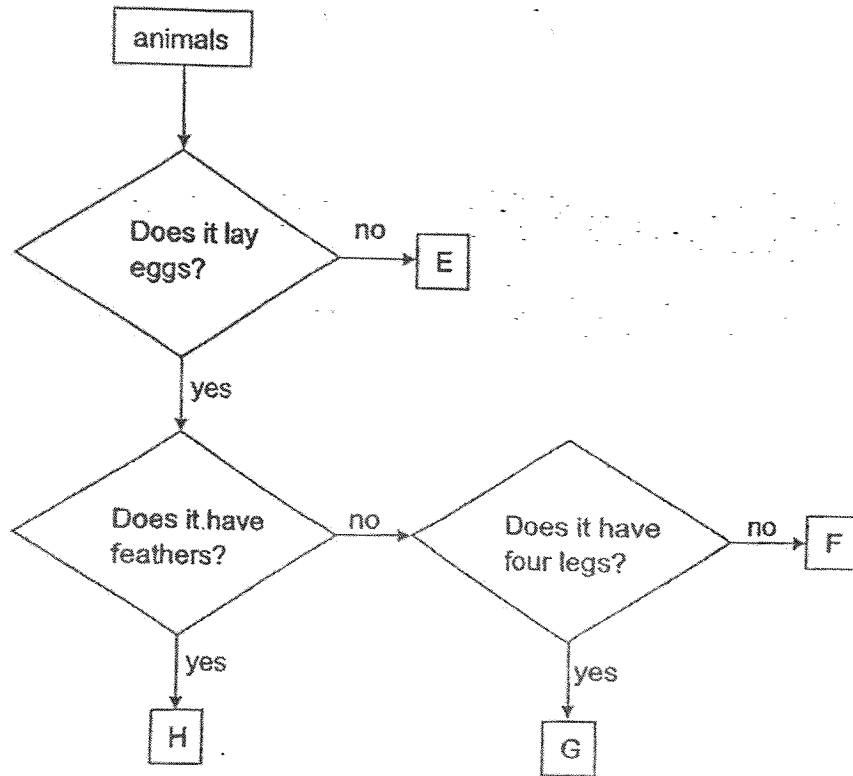
- (1) Both plants bear flowers.
- (2) Both plants reproduce by spores.
- (3) Plant A bear fruits but Plant B does not bear fruits.
- (4) Plant A can make its own food, but Plant B cannot make its own food.

()

Marks :

14

7. Study the flowchart below.



Based on the flowchart, which animals above, E, F, G or H, represents an ant?

- (1) E
- (2) F
- (3) G
- (4) H

()

Marks :

12

8. Study the table below.
A tick (✓) shows that the living thing has the characteristic.

Living things	Characteristics		
	reproduce by spores	makes its own food	can only be seen with a microscope
S		✓	
T	✓		
U			✓
W	✓	✓	

Based on the table above, which living thing S, T, U or W, best represents bacteria?

- (1) S
(2) T
(3) U
(4) W

()

Marks :

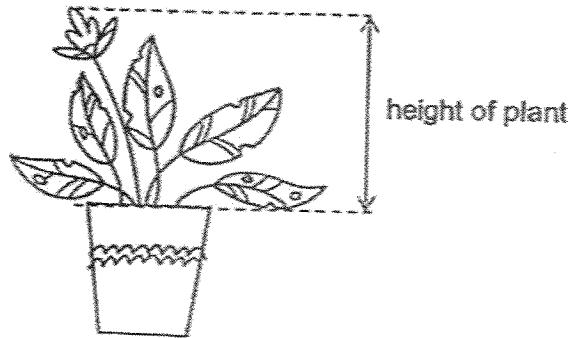
12

SECTION B : [14 marks]

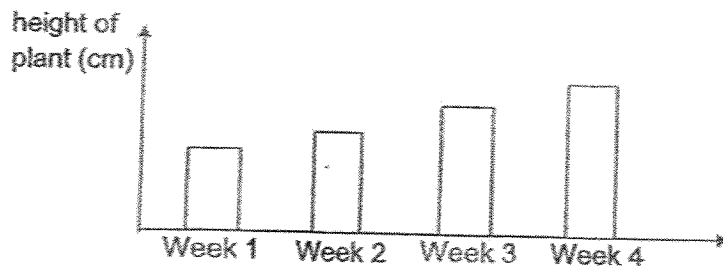
For questions 9 to 12, write your answers in this booklet.

The number of marks available is shown in the brackets [] at the end of each question or part-question.

9. Mary watered her plant every day and made sure that it had enough sunlight. She measured the height of her plant over four weeks.



She recorded her findings in the graph below.

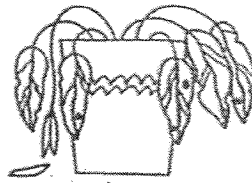


- (a) (i) State the change in the height of the plant over the four weeks. [1]

- (ii) State the characteristics of living things shown by the plant based on her observation above. [1]

Marks :

- (b) Mary was away on a holiday. After two weeks, she found that the plant has wilted as shown below.



wilted plant

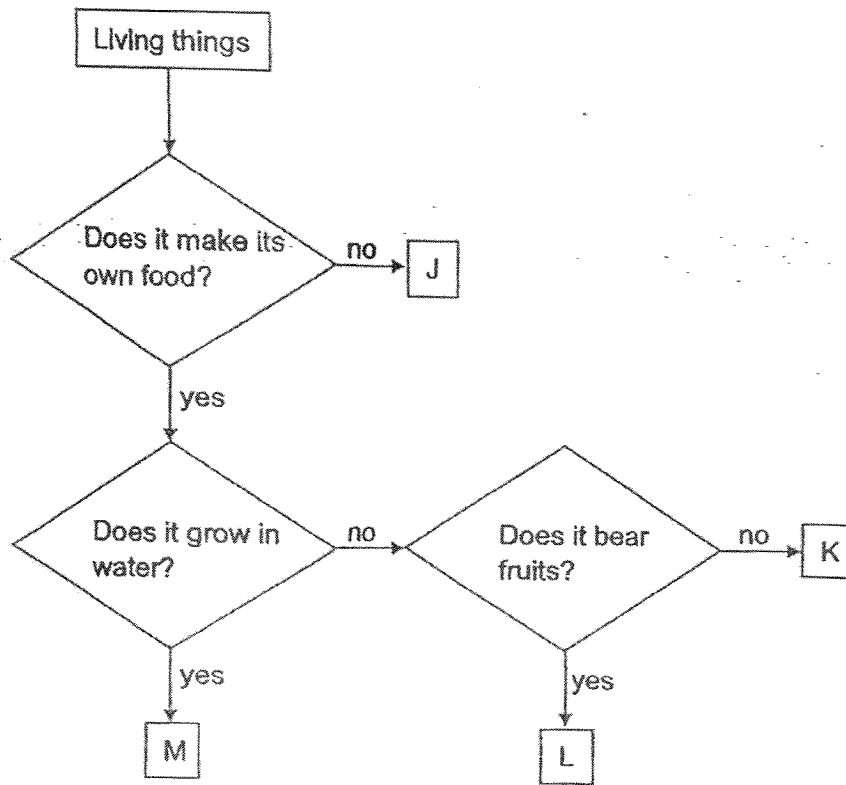
Explain why the plant wilted after two weeks.

[2]

Marks:

12

10. Study the flowchart below.

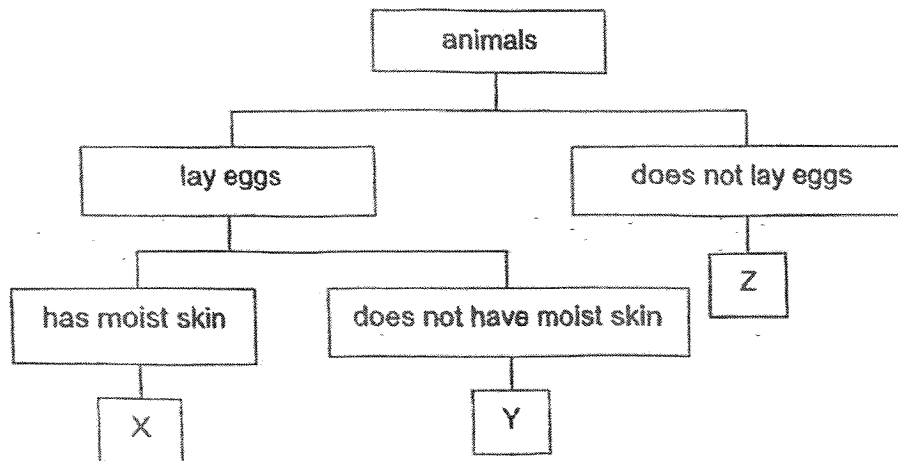


(a) Based on the flowchart above, state a reason why living thing M is a plant. [1]

(b) "Living thing K is a flowering plant." Explain why the statement above is false. [1]

Marks: - / 2

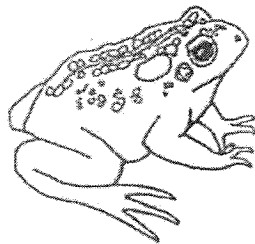
11. Study the classification chart below.



(a) Based on the chart above, which group of animals best represents Z? [1]

(b) Based on the chart above, state a difference between animal X and Z. [1]

Study the animal below.



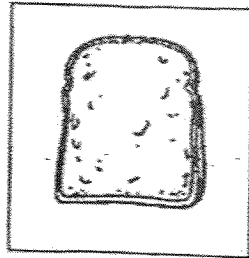
animal N

(c) Based on the chart above, which animals, X, Y or Z best represents animal N above? Explain your answer. [2]

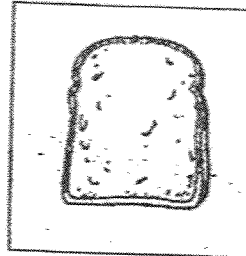
Marks:

/ 4

12. Two similar bread slices, J and K were sprinkled with the same amount of water. Both breads were then left in different places as shown in the diagrams below for one week.

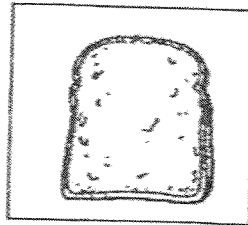


Bread J in fridge
temperature: 3°C



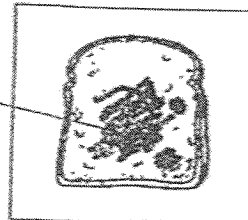
Bread K in living room
temperature: 28°C

After a week, some grey living thing P grew on bread K as shown below.



Bread J in fridge

living
thing
P



Bread K in living room

- (a) Identify living thing P. [1]

- (b) Why was water added to breads J and K? [1]

Marks: / 2

12. (c) Place a tick (✓) in the table below to show the place of the experiment with a higher temperature. [1]

	Place of experiment with a higher temperature
Fridge	
Living room	

- (d) Based on the results, state how the temperature affects the growth of living thing P. [1]

Marks:

12

- END OF PAPER -

This is the property of Maha Bodhi School.

No part of this should be duplicated without the permission of the school.

SCHOOL : MAHA BODHI PRIMARY SCHOOL
LEVEL : PRIMARY 3
SUBJECT : SCIENCE
TERM : 2025 WEIGHTED ASSESSMENT 1

Q1	Q2	Q3	Q4	Q5	Q6	Q7	Q8		
3	2	2	1	1	3	2	3		

Q9a(i)	The plant grew taller over the four weeks.
Q9a(ii)	Living things grow.
Q9b	Living things need air to live, Mary did not water the plant when she was away. The plant had no water. Living things need water to survive.
Q10a	M makes its own food.
Q10b	Non-flowering plants do not bear fruits.
Q11a	Mammals.
Q11b	Animal X has moist skin but animal Z does not have moist skin.
Q11c	X, a frog has moist skin and lay eggs.
Q12a	Bread mould.
Q12b	Mould need water to grow.
Q12c	Living room
Q12d	The higher the temperature, the more the living thing P grows.

www.sgexam.com