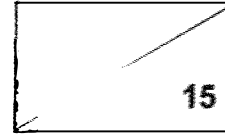


NANYANG PRIMARY SCHOOL
Term 1 Weighted Assessment
Science
Primary 3



Name: _____

Date: _____

Class: _____

Parent's signature: _____

Dear Parent/Guardian,

Please sign the Weighted Assessment paper and have your child/ward return it the next day. Any query should be raised at the same time when returning the paper.

Section A: Multiple Choice Questions (10 marks)

For each question from 1 to 5, four options (1, 2, 3 and 4) are given. One of them is the correct answer. Indicate your choice in the brackets provided.

1. Study the classification table below.

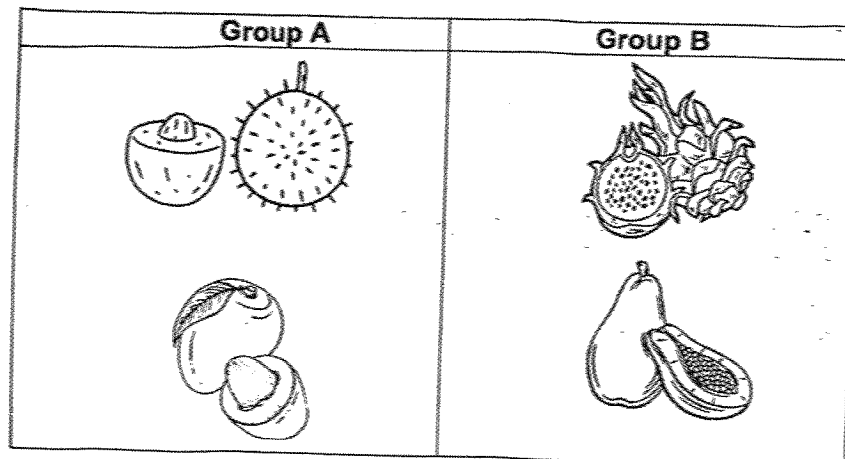
Living Things	Non-living Things
ant	book
tree	toy bear
chicken	mushroom

Which one of the following is classified wrongly?

- (1) ant
- (2) tree
- (3) toy bear
- (4) mushroom

()

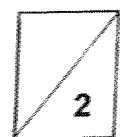
2. Study the table below.



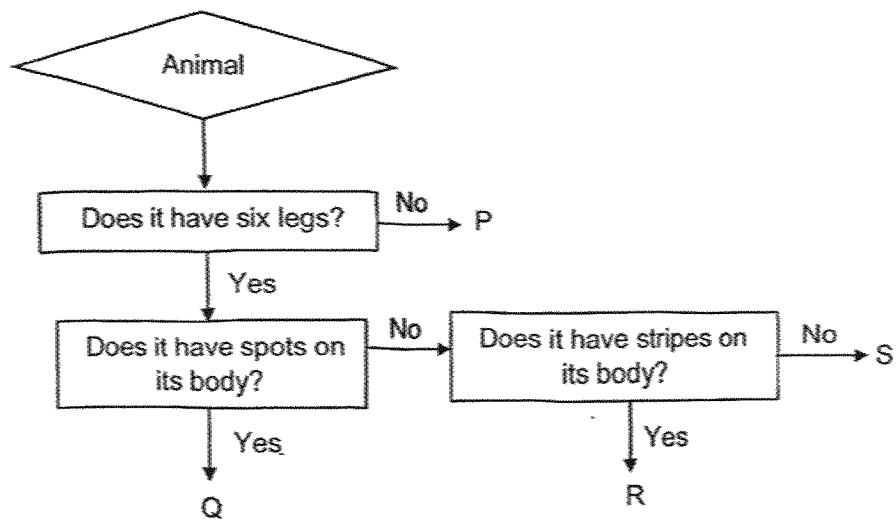
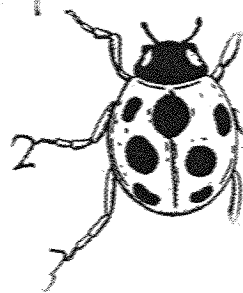
Based on the observable characteristics of the fruits above, which one of the following best represents the headings for Groups A and B?

	Group A	Group B
(1)	Has rough skin	Has smooth skin
(2)	Rectangular and thin	Circular and thick
(3)	Has one seed	Has many seeds
(4)	Grows on land	Grows in water

()



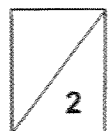
3. The diagram below shows an animal.



Based on what is observed from the diagram, which of the following represents the animal?

- (1) P
- (2) Q
- (3) R
- (4) S

()



4. The table below shows the characteristics of X, Y and Z.

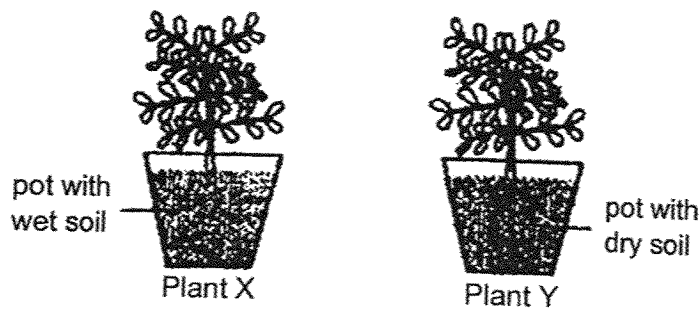
Characteristic	X	Y	Z
Can make its own food		√	
Can reproduce	√	√	

Which of the following best represents X, Y and Z?

	X	Y	Z
(1)	non-living thing	animal	plant
(2)	plant	non-living thing	animal
(3)	animal	plant	non-living thing
(4)	non-living thing	plant	animal

()

5. Mrs Lee placed two similar pots of plants, X and Y, in the school garden for a few days. She watered plant X daily but did not water plant Y.



After some time, she observed that plant Y died but plant X grew taller. Based on the experiment, she concluded that plants need _____ to stay alive.

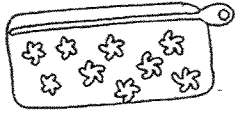

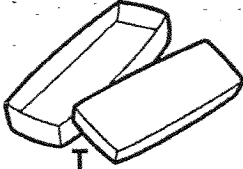
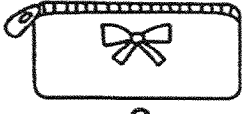
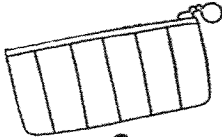
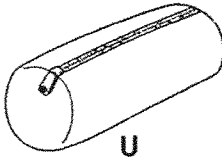
- (1) air
- (2) light
- (3) food
- (4) water

()

Section B: Open-Ended Questions (5 marks)

For questions 6 and 7, fill in your answers in the spaces provided.

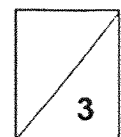
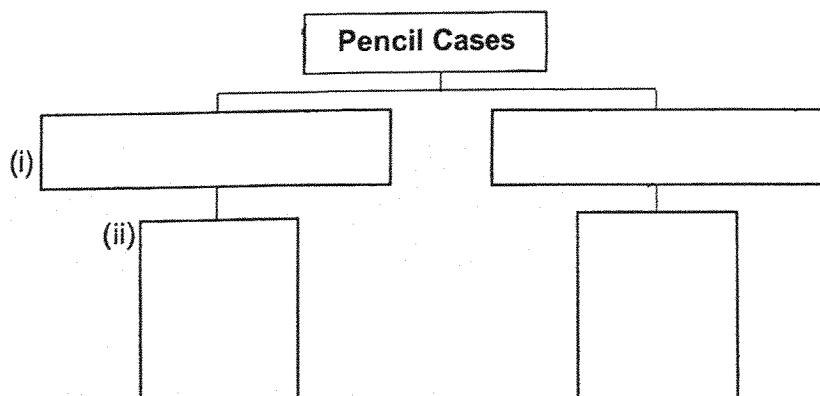
6. Jill has 6 pencil cases, P, Q, R, S, T and U.
She classified them into three groups as shown below.

Group 1	Group 2	Group 3
 P	 R	 T
 Q	 S	 U

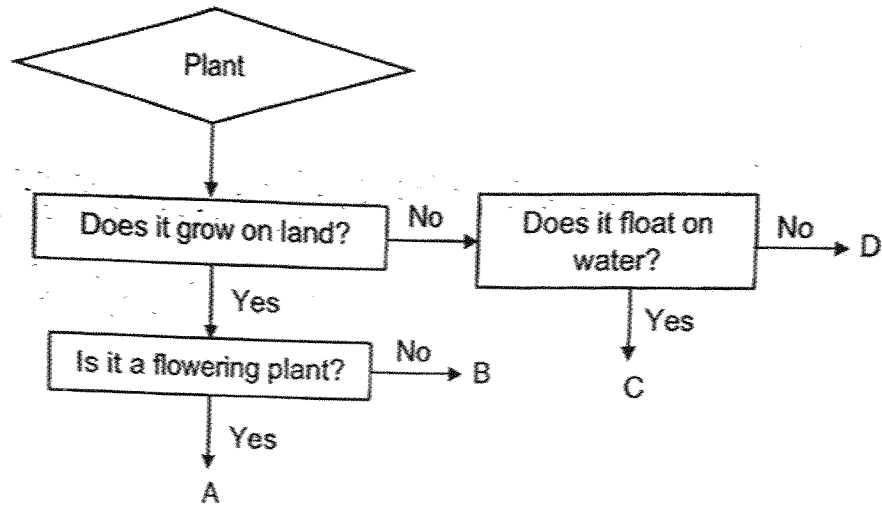
- (a) What is the heading for Group 3? [1]

Group 1	Has picture design
Group 2	Has line design
Group 3	

- (b) Classify the same six pencil cases into two groups, in another way. [1]
 (i) Give suitable headings. [1]
 (ii) Write the letters (P, Q, R, S, T, U) to represent the pencil cases. [1]



7. Study the diagram below.



(a) What is one similarity between plants A and B? [1]

(b) What is one difference between plants C and D? [1]

- End of Paper -

SCHOOL : NANYANG PRIMARY SCHOOL
LEVEL : PRIMARY 3
SUBJECT : SCIENCE
TERM : 2025 WEIGHTED ASSESSMENT 1

Q1	Q2	Q3	Q4	Q5					
4	3	2	3	4					

6a	Group 3 – Has no design
6b	Has Zip: P, Q, S, U Has no Zip: R, T
7a	Both plants A and B grow on land.
7b	Plant C floats on water but plant D does not.

www.sgexam.com

www.sgexam.com