

**RAFFLES GIRLS' PRIMARY SCHOOL
WEIGHTED ASSESSMENT 1
PRIMARY THREE**

SCIENCE

Name: _____ ()

Date : 9 May 2025

Class: P3 _____

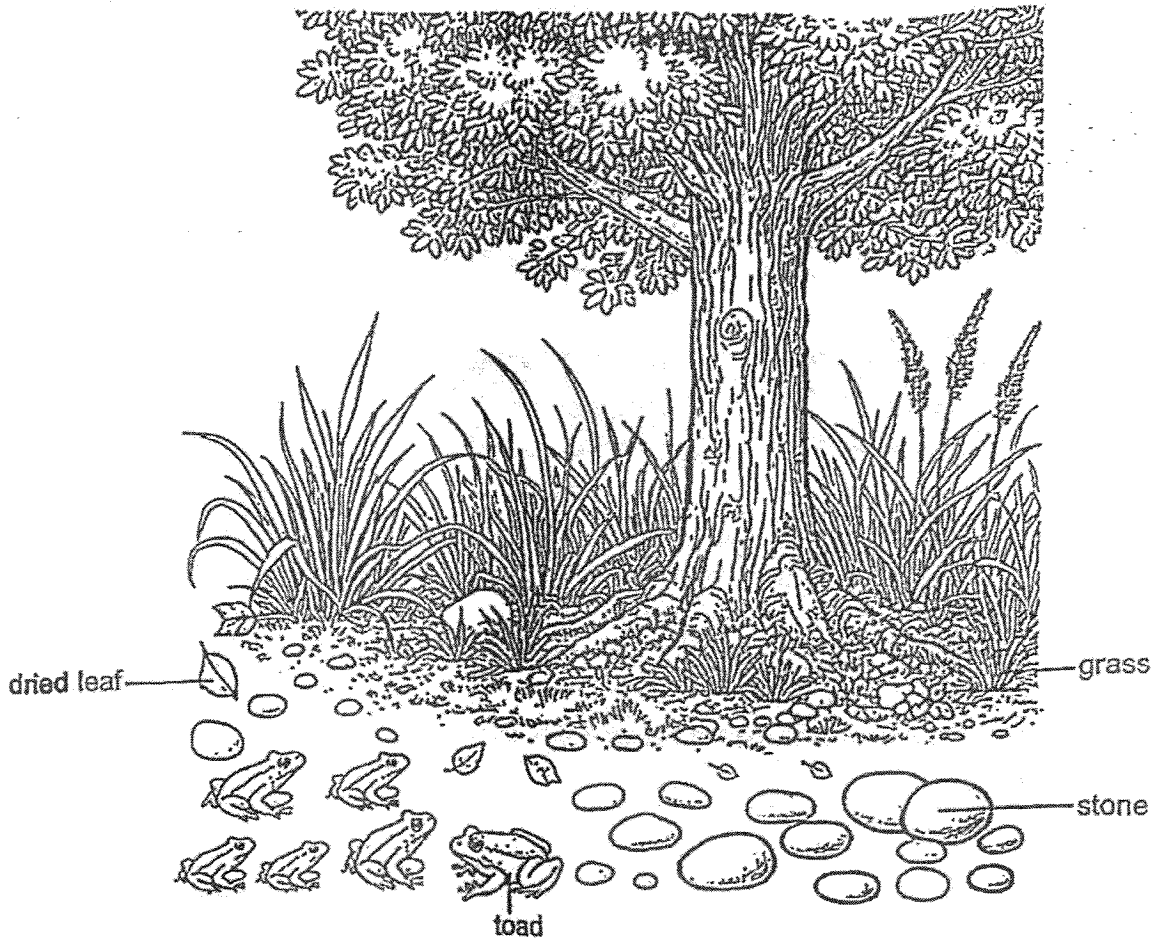
Total Time: 40 minutes

INSTRUCTIONS TO CANDIDATES

1. Write your name, class and index number in the spaces provided above.
2. Do not turn over this page until you are told to do so.
3. Follow all instructions carefully.
4. Answer all questions.
5. For questions 1 to 3, write your answers clearly in the spaces provided.
6. The number of marks is shown in brackets [] at the end of each question or part question.

Your score out of 15	
Parent's signature	

1. Victoria visited a garden. She identified four things as shown below.



(a) Classify the things that Victoria identified in the table below. [2]

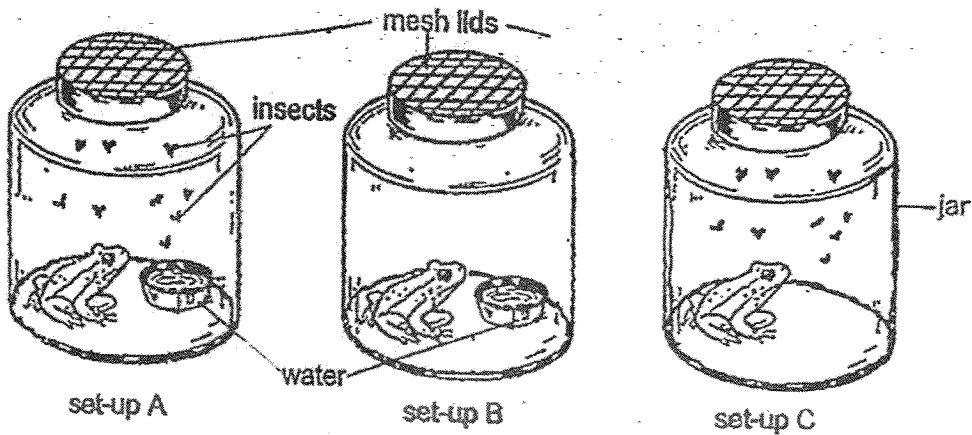
Living things	Non-living things

Continue on page 2

Score	2
-------	---

Continued from page 1

Victoria put an identical type of toad into each identical jar as shown below.



- (b) Based on the information above, which two set-ups should Victoria use to find out if living things need water to survive? [1]

Set-ups _____ and _____

- (c) Explain why the toad in set-up B died after some time. [1]

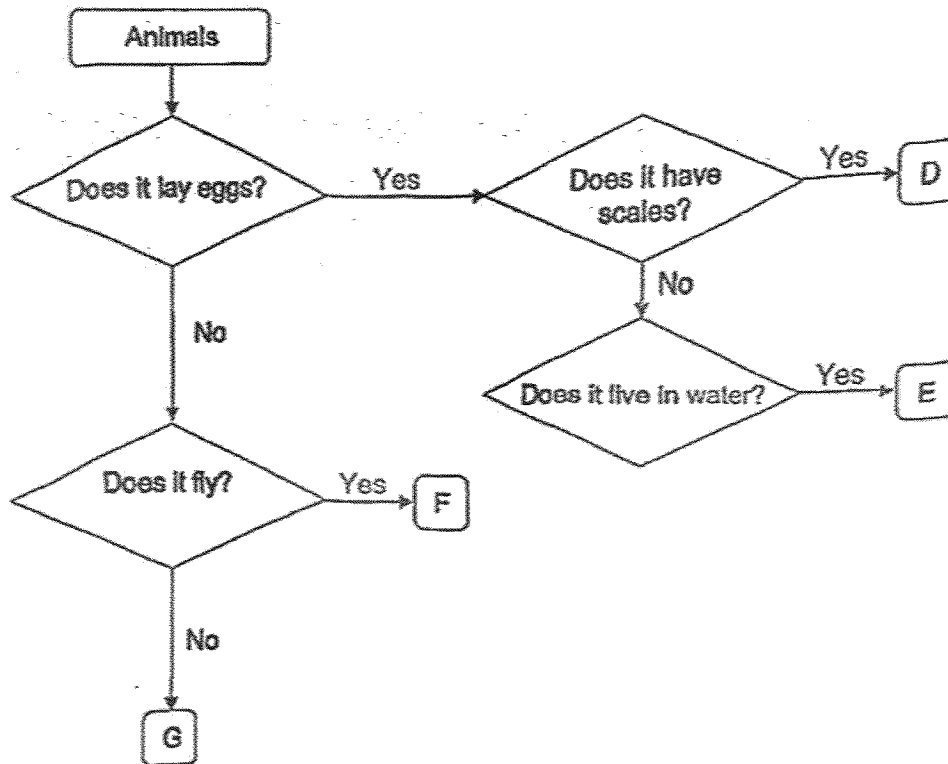
Victoria measured the mass of the toad in set-up A over two weeks and recorded it in the table below.

Day	Mass of the toad (g)
1	20
7	25
14	30

- (d) State the characteristic of living thing that is shown by the results above. [1]

Score	3
-------	---

2. Study the flow-chart below.



Based on the information given in the flow-chart above, answer the following questions.

(a) What animal group does animal D belong to? [1]

(b) State the characteristics of animal F. [1]

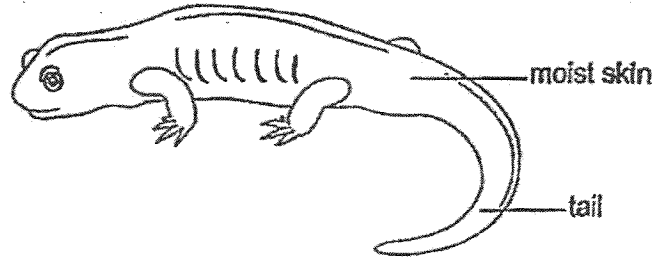
(c) State a difference between animals E and G. [1]

Continue on page 4

Score	3
-------	---

Continued from page 3

The diagram below shows animal H.



- (d) Charmaine concluded that animal H was a reptile. Her teacher told her she was not correct.

Do you agree? Give a reason for your answer.

[1]

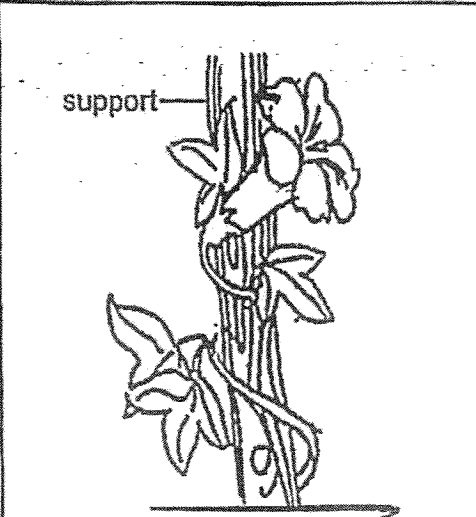

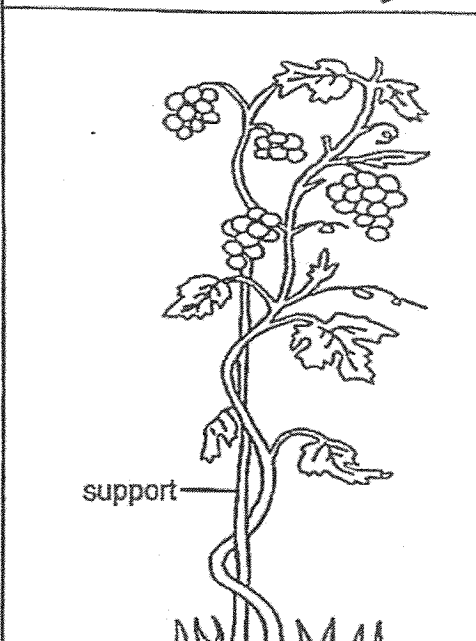
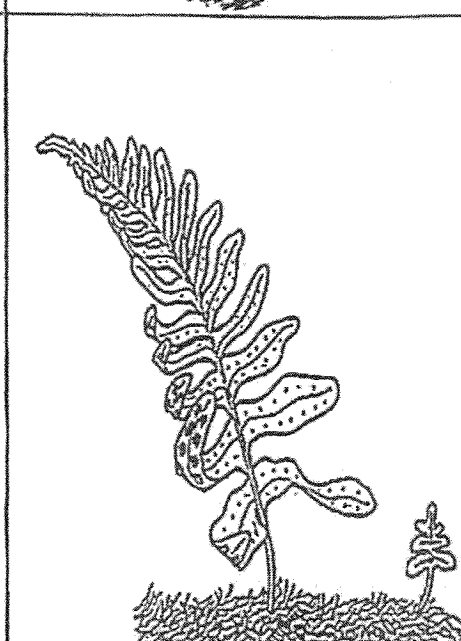
- (e) Name an example of a reptile.

[1]

Score	2
-------	---

P3 Science WA1 2025

3. Tom classified four plants into groups A and B.

Plants	
Group A	Group B
	
	

Continue on page 6

Continued from page 5

(a) Fill in the correct headings for groups A and B.

[2]

A	
B	

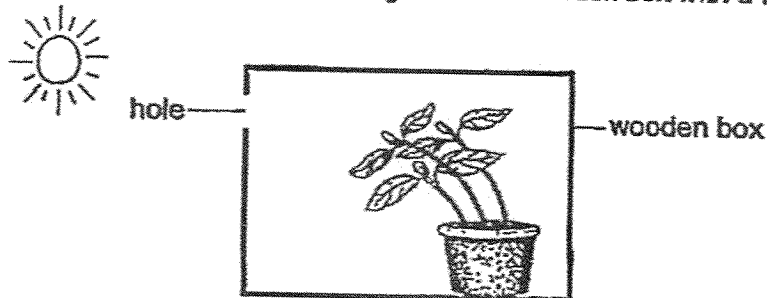
(b) Based on Tom's observations, he made the following statements about the characteristics of plants in groups A and B.

Put a tick (✓) in the correct box for each statement below.

[2]

	Statements	True	False
(i)	The plants in both groups are land plants.		
(ii)	The plants in both groups reproduce by seeds.		
(iii)	The plants in group A can make its own food but plants in group B cannot.		
(iv)	The plants in both groups have stems that allow them to stand upright on their own.		

The diagram below shows a plant Tom had grown in a wooden box with a hole.



(c) Which characteristic of living things does the plant above show?

[1]

End of Paper

Score	5
-------	---

SCHOOL : RAFFLES GIRLS' PRIMARY SCHOOL
LEVEL : PRIMARY 3
SUBJECT : SCIENCE
TERM : 2025 WEIGHTED ASSESSMENT 1

1a	Living things: toad and grass Non-living things: stone and dried leaf
1b	Set-up A and C
1c	As there was no food in the set-up B. The toad is a living thing and living things need food to survive.
1d	Living things grow.
2a	Fish/reptiles
2b	F can fly but does not lay eggs.
2c	E lay eggs but G does not lay eggs.
2d	Yes. As reptiles have dry skin and scales but animal H has moist skin. Hence, animal H is not a reptile.
2e	Crocodile
3a	A: Flowering plants B: Non-flowering plants
3b	True, false, false, false
3c	Living things respond to change around them.

www.sgexam.com