

**TAO NAN SCHOOL**  
**2025 PRIMARY 3 WEIGHTED ASSESSMENT 1**

**SCIENCE**


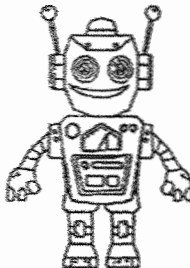
Section A	12
Section B	8
Total	20
Parents' Signature:	

**Section A (6 x 2 marks)**

For each question from 1 to 6, four options are given. One of them is the correct answer. Make your choice (1, 2, 3 or 4) and write the answer in the brackets provided.

(12 marks)

1. Study the table below.

A	B
	

Which one of the following statements is correct?

- (1) B can grow.
- (2) B can reproduce.
- (3) A needs air, food and water to survive.
- (4) A does not respond to changes around them.

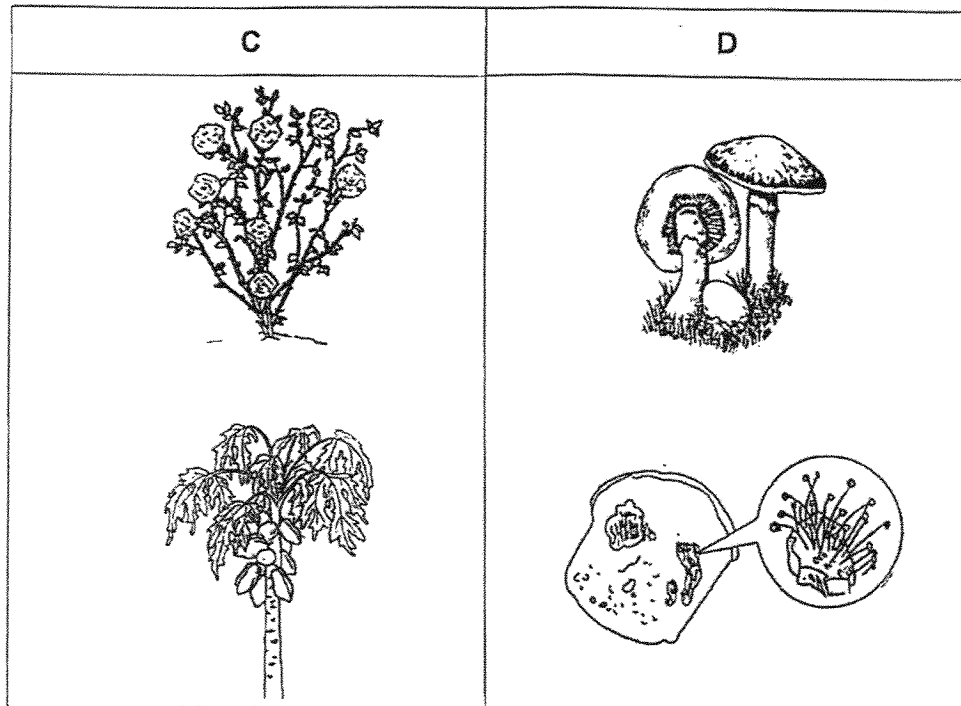
( )

2. Which of the following statements about bacteria and fungi is **incorrect**?

- (1) Both respond to changes.
- (2) Both reproduce by spores.
- (3) Both feed on dead and living things.
- (4) Both can be useful and harmful to us.

( )

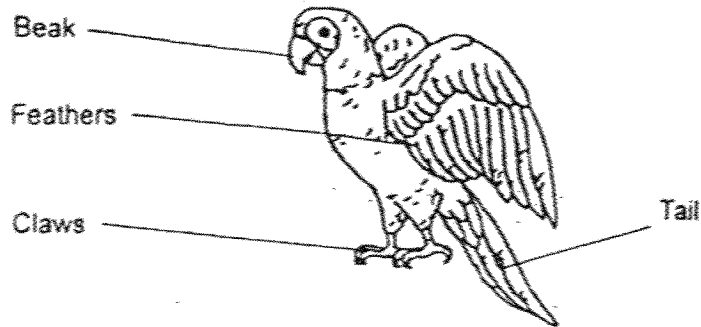
3. Study the pictures below. How are the living things classified in groups C and D?



	C	D
(1)	Has leaves and stem	Does not have leaves and stem
(2)	Reproduce from spores	Reproduce from seeds
(3)	Flowering plants	Non-flowering plants
(4)	Unable to make their own food	Able to make their own food

( )

4. Fatimah wants to find out if the animal shown below is a bird.

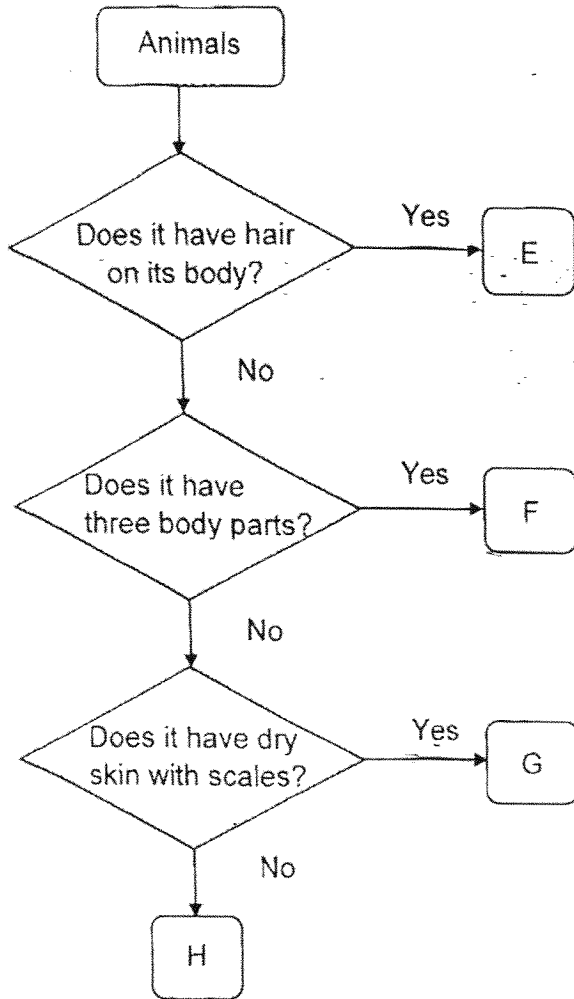


Which main characteristic helps to determine if the animal is a bird?

- (1) tail
- (2) beak
- (3) feathers
- (4) claws

( )

5. Study the flowchart below.



Which animal groups do E, F, G and H represent?

	E	F	G	H
(1)	mammal	insect	fish	reptile
(2)	insect	mammal	fish	reptile
(3)	insect	mammal	reptile	fish
(4)	mammal	insect	reptile	fish

( )

6. The table below shows the characteristics of living things X, Y and Z.

Characteristics	Living Thing		
	X	Y	Z
Can it make its own food?	Yes	Yes	No
Can it have fruits?	Yes	No	No

Which of the following statements is definitely true?

- (1) X and Y are plants.
- (2) Z is a type of bacteria.
- (3) Z reproduces by spores.
- (4) Y and Z are non-flowering plants.

End of Section A

**Section B (4 x 2 marks)**

For questions 7 to 10, write your answers clearly in this section.

The number of marks available is shown in brackets [ ] at the end of each question or part question.

(8 marks)

7. Janet planted a seed in her garden and observed it over a period of 5 weeks. She measured and recorded its height as shown in the table below.

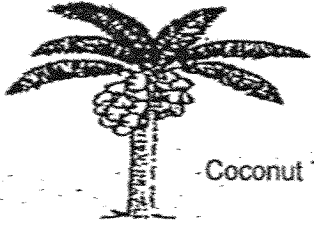
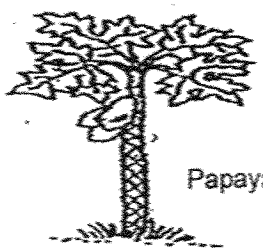
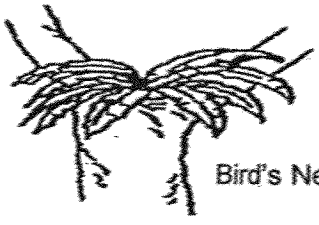
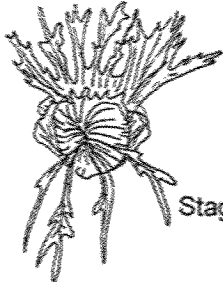
Number of weeks	Height (cm)
1	3
2	7
3	12
4	17
5	24

- (a) From the table above, what do you observe about the height of the plant over the past 5 weeks? [1]

- (b) Based on the changes in the height of the plant, state the characteristics of living things shown. [1]

Score	2
-------	---

8. Study the classification chart below.

Group G	Group H
 <p>Coconut Tree</p>  <p>Papaya Tree</p>	 <p>Bird's Nest Fern</p>  <p>Staghorn Fern</p>

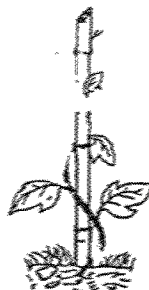
(a) Suggest suitable headings for Groups G and H.

[1]

Group G: \_\_\_\_\_

Group H: \_\_\_\_\_

Asha found a plant in her garden and did not see any flowers on it. She concluded that the plant is a non-flowering plant.



(b) Are all plants which do not have flowers considered non-flowering plants?  
Explain your answer.

[1]

---



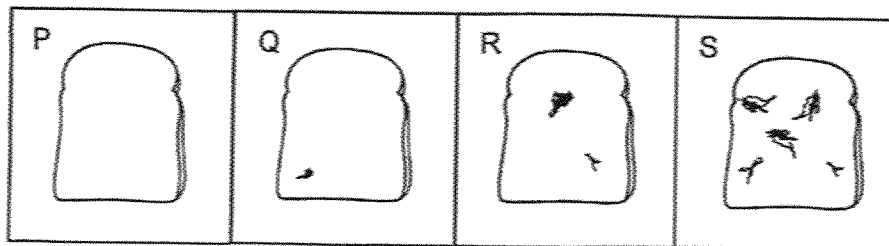
---

Score	2
-------	---

9. In an experiment, Sonya kept four identical slices of bread P, Q, R and S under different conditions as shown below.

Bread	Conditions	
	Amount of water (ml)	Temperature (°C)
P	0	26
Q	10	28
R	10	30
S	10	32

After two weeks, Sonya counted the number of patches of mould on the four slices of bread. She recorded her observations in the table below.



- (a) Based on the results, state the conditions for the most amount of mould to grow. [1]

Conditions : \_\_\_\_\_ ml of water and \_\_\_\_\_ °C

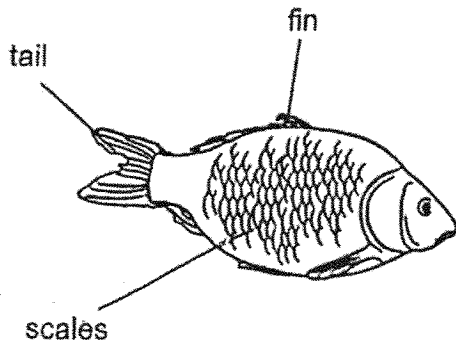
- (b) Sonya then wanted to find out if the presence of light affects the growth of mould. She has 4 set-ups below each with bread of an identical size. Which 2 set-ups A, B, C or D should she use so that she can conduct a fair test? [1]

Set-up / Condition	A	B	C	D
Amount of water (ml)	0	10	5	10
Temperature (°C)	2	20	2	20
Presence of light	No	Yes	Yes	No
Type of bread	White	White	Wholemeal	White

Set-ups \_\_\_\_\_ and \_\_\_\_\_.

Score	2
-------	---

10. Study the pictures below carefully. (The animals are not drawn to scale.)



Animal X



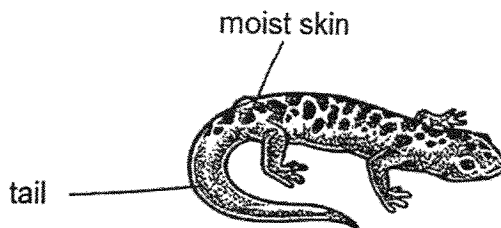
Animal Y

(a) Circle the **animal group** each of the above animals belong to.

Animal X: (Bird / Fish / Amphibian / Reptile / Mammal / Insect) [½]

Animal Y: (Bird / Fish / Amphibian / Reptile / Mammal / Insect) [½]

(b) Study animal Z.



Animal Z

Does it belong to the same animal group as animal X? Explain why using a unique characteristic of that animal group. [1]

---

---

End of paper

Score	2
-------	---

[www.sgexam.com](http://www.sgexam.com)

**SCHOOL : TAO NAN PRIMARY SCHOOL**  
**LEVEL : PRIMARY 3**  
**SUBJECT : SCIENCE**  
**TERM : 2025 WEIGHTED ASSESSMENT 1**

Q1	Q2	Q3	Q4	Q5	Q6				
3	1	1	2	1	1				

Q7(a)	The height of the plant increases over the past 5 weeks.
Q7(b)	Living things grow.
Q8(a)	Group G: Flowering plant Group H: Non-flowering plant
Q8(b)	No. Plants need sunlight to grow. So this plant has weak stem and needs support to reach out for sunlight in order to grow.
Q9(a)	10 ml of water and 32c
Q9(b)	set-up B and set-up D
Q10(a)	Animal X: Fish Animal Y: Mammal
Q10(b)	No. Animal Z has moist skin and live on both land water. It is an amphibian.

[www.sgexam.com](http://www.sgexam.com)