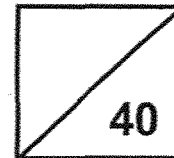




**Rosyth School**  
**Weighted Assessment 2025 (Term Two)**  
**SCIENCE**  
**Primary 3**

Name: \_\_\_\_\_ Total Marks: \_\_\_\_\_



Class: Pr 3 \_\_\_\_\_ Register No. \_\_\_\_\_ Duration: 50 min

Date: \_\_\_\_\_ May 2025 Parent's Signature: \_\_\_\_\_

Instructions to Pupils:

1. Do not open the booklet until you are told to do so.
2. Follow all instructions carefully.
3. For questions 1 to 12, shade the correct ovals on the Optical Answer Sheet (OAS) provided using a 2B pencil.
4. For questions 13 to 17, give your answers in the spaces provided.

	<b>Maximum Marks</b>	<b>Marks Obtained</b>
<b>Q1 - Q12</b>	<b>24 marks</b>	
<b>Q13 - Q17</b>	<b>16 marks</b>	
<b>Total</b>	<b>40 marks</b>	

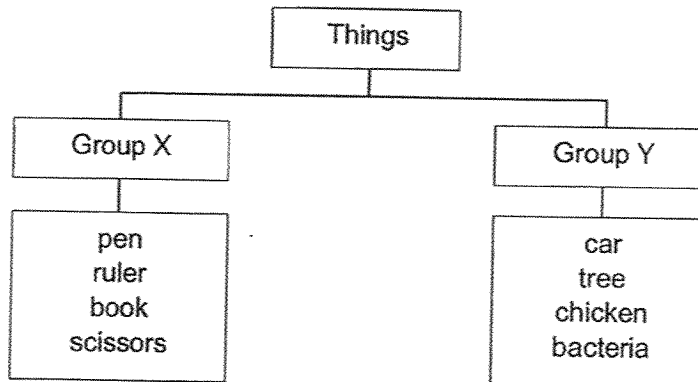
\* This booklet consists of 15 printed pages (including this cover page).

For each question from 1 to 12, four options are given. One of them is the correct answer. Make your choice (1, 2, 3 or 4). **Shade the correct oval (1, 2, 3 or 4) on the Optical Answer Sheet (OAS).** (24 marks)

1. Which one of the following statements is **not** a characteristic of all living things?

- (1) Living things reproduce.
- (2) Living things respond to changes.
- (3) Living things make their own food.
- (4) Living things need air, food and water to survive.

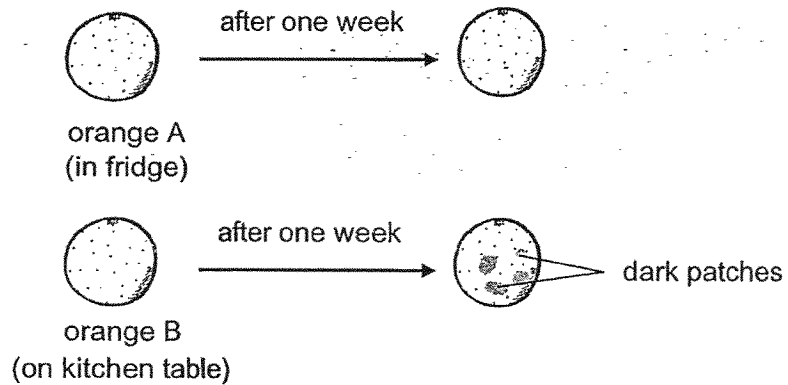
2. Study the classification table below.



Which of the following has been classified **wrongly**?

- (1) car
- (2) book
- (3) chicken
- (4) bacteria

3. Brenda conducted an experiment with two similar oranges, A and B. She placed A in the fridge and B on the kitchen table. After one week, she observed some dark patches growing on B as shown in the diagram below. Her mother told her that the dark patches were living things.



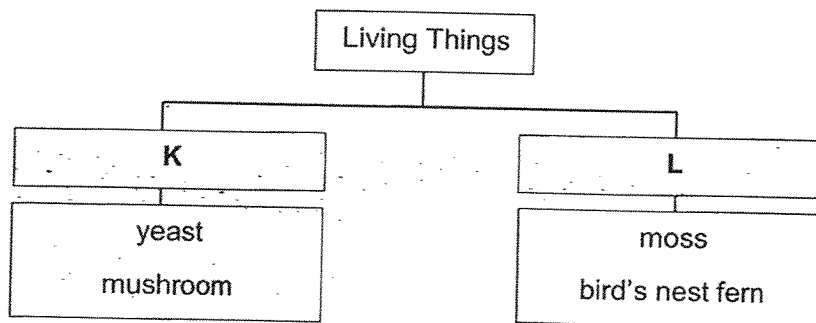
Based on Brenda's experiment, the living things needed \_\_\_\_\_ to grow.

- (1) air
  - (2) food
  - (3) water
  - (4) warmth
4. Sumei listed the characteristics of animal X.
- A X can swim.
  - B X breathes through gills.
  - C X reproduces by laying eggs.
  - D The body of X is covered with scales.

Which of the above characteristic helps Sumei to identify X as a fish?

- (1) A
- (2) B
- (3) C
- (4) D

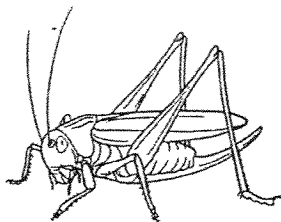
5. Study the classification chart below.



Which of the following correctly represents the headings K and L?

	K	L
(1)	Reproduce by spores	Reproduce by seeds
(2)	Flowering plants	Non-flowering plants
(3)	Grow in water	Grow on land
(4)	Fungi	Plants

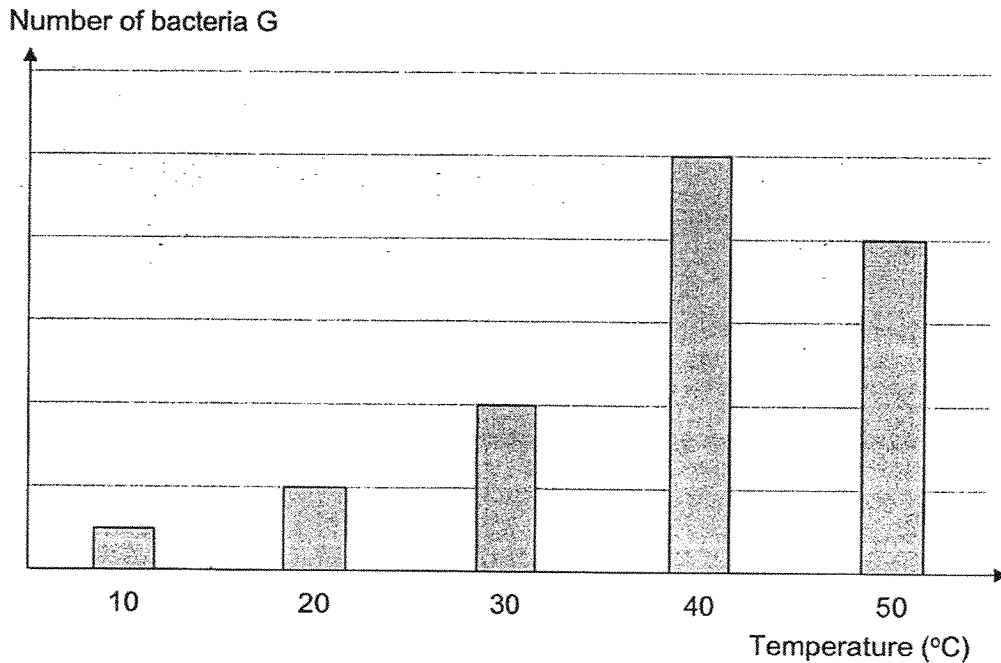
6. Halim found animal Y as shown below in a garden.



Which characteristic helps Halim to identify animal Y as an insect?

- (1) Y lays eggs.
- (2) Y has wings.
- (3) Y has six legs.
- (4) Y feeds on plants.

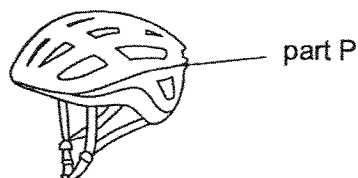
7. The graph below shows the number of bacteria G at different temperatures.



Based on the graph, which temperature is most suitable for bacteria G to grow?

- (1) 20 °C
- (2) 30 °C
- (3) 40 °C
- (4) 50 °C









8. Part P of a cycling helmet protects a cyclist's head.



Which property of material should be considered when choosing a suitable material to make part P?

- (1) strength
- (2) flexibility
- (3) ability to sink
- (4) transparency

9. The table below shows some items which are classified based on the materials they are made of.

Group W	Group X	Group Y	Group Z
 sock	 textbook	 rubber band	 coin
 shirt	 newspaper	 eraser	 needle

In which group does a metal can belong to?

- (1) Group W
- (2) Group X
- (3) Group Y
- (4) Group Z

10. Charlene listed the properties of four materials, A, B, C and D, as shown in the table below. A tick (✓) shows the presence of the property.

Property	Materials			
	A	B	C	D
Is it strong?				
Is it flexible?				
Is it waterproof?				

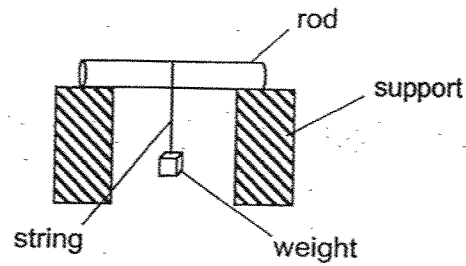
The diagram below shows a boy sitting on a swimming float.



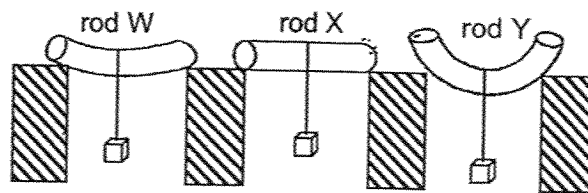
Which material is most suitable to make the swimming float?

- (1) A
- (2) B
- (3) C
- (4) D

11. Rods W, X and Y, have the same thickness but are made of different materials. A similar weight is hung on each rod as shown in the set-up below.



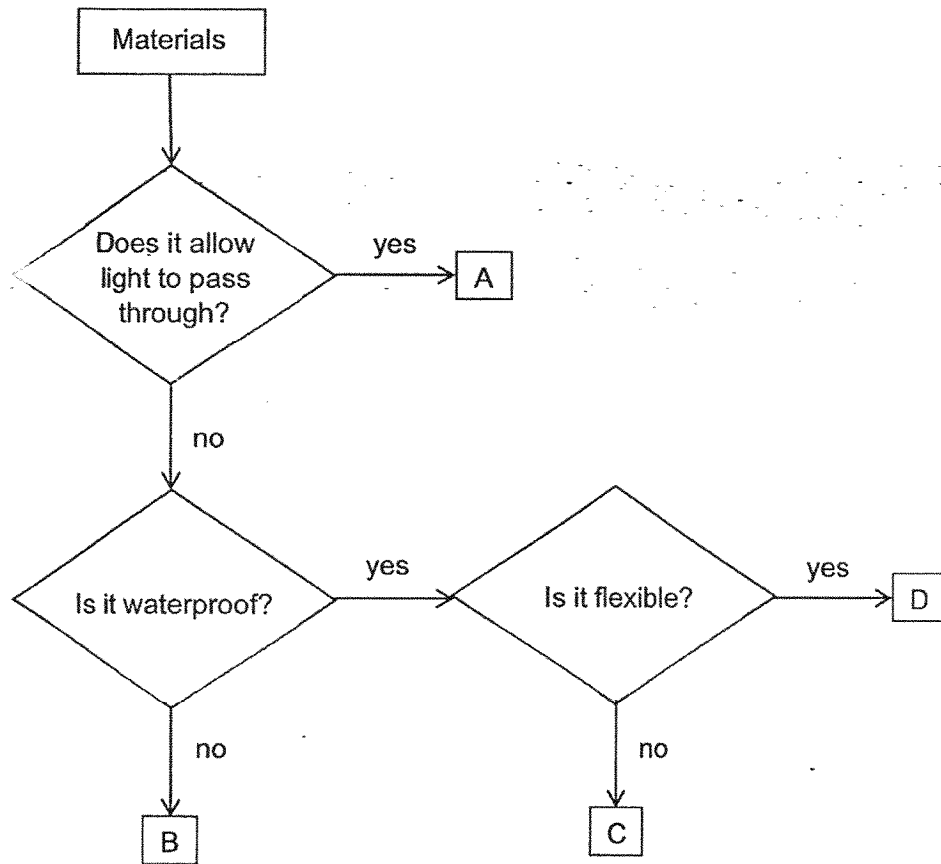
The diagram below shows how the three rods look like when the weight is hanging on it.



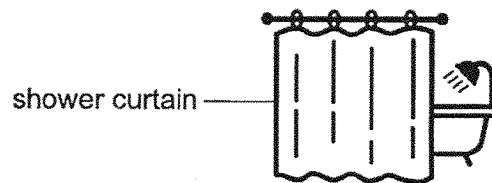
Which of the following statements is correct?

- (1) Rod Y is the strongest.
- (2) Rod X is the strongest.
- (3) Rod W is less flexible than rod Y.
- (4) Rod X is more flexible than rod Y.

12. Study the flowchart below.



Which material, A, B, C or D, is most suitable for making the shower curtain so that the user will not be seen when showering?

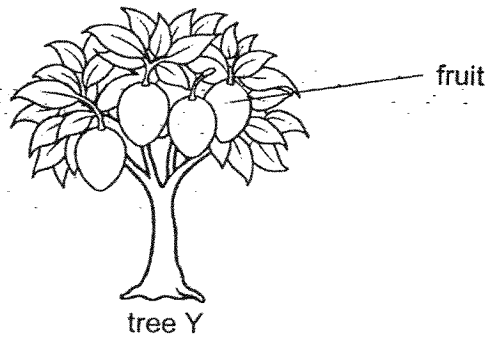


- (1) A
- (2) B
- (3) C
- (4) D

For questions 13 to 17, write your answers in spaces provided.

(16 marks)

13. Cheryl saw tree Y in a park.



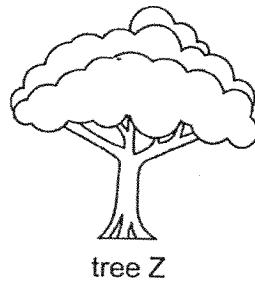
(a) State a difference between how tree Y and a fern reproduce.

[1]

---

---

Cheryl saw tree Z in another part of the park.



She saw that tree Z did not have any flowers and concluded that it is a non-flowering plant.

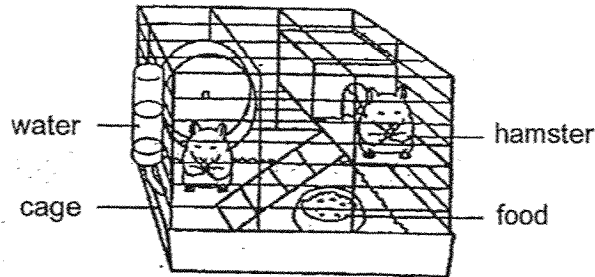
(b) Suggest a reason why Cheryl could be wrong.

[1]

---

---

14. Javier kept two hamsters in a cage as shown below.



(a) What would Javier observe about the amount of water and food in the cage after a day? [1]

---

(b) Based on his observation in (a), state one characteristic of living things that is shown by the hamsters. [1]

---

Javier continued to observe the hamsters daily and recorded the number of hamsters after five weeks in the table below. No hamsters were added or removed from the cage.

Week	Number of hamsters
1	2
5	10

(c) Based on the table above, state another characteristic of living things. [1]

---

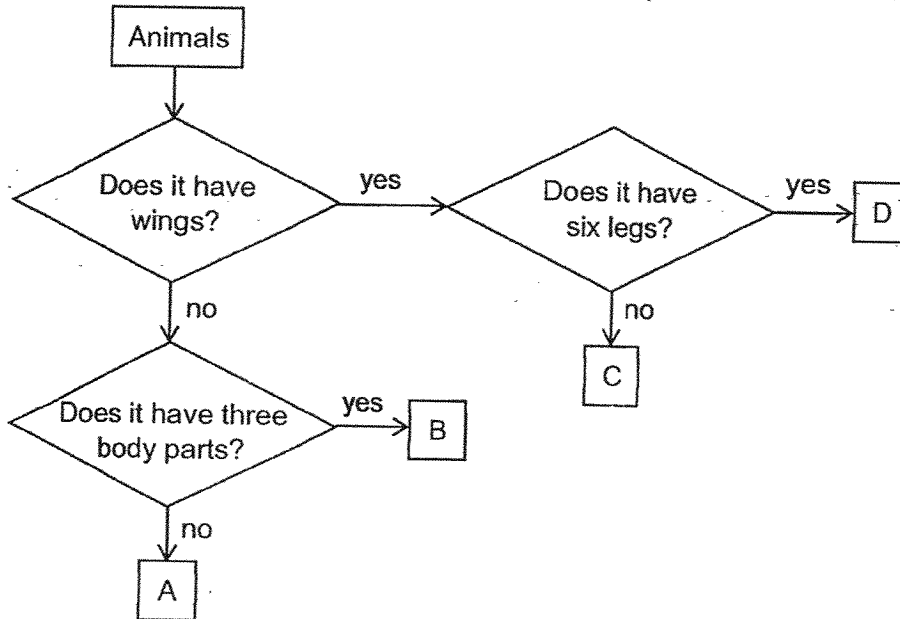
(d) What should Javier measure about the hamsters to conclude that living things grow? [1]

---



---

15. Study the flowchart below. Letters, A, B, C and D, represent four different animals.



Use the flowchart above to answer the following questions.

(a) State a similarity between animal A and animal B. [1]

---



---

(b) Which of these animals, A, B, C and/or D, is/are likely to be insect(s)? [1]

---

(c) The diagram below shows an animal.



Match the animal to the correct letter (A, B, C or D) in the flowchart. [1]

It is animal \_\_\_\_\_.

16. The table below shows the properties of three materials, P, Q and R.

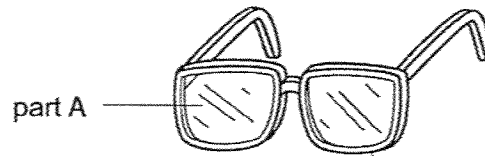
Material	Property			
	Waterproof	Flexible	Strong	Allow light to pass through
P	✓	✓		
Q	✓		✓	✓
R		✓	✓	

(a) State two properties of material R. [1]

(i) \_\_\_\_\_

(ii) \_\_\_\_\_

(b) The diagram below shows a pair of glasses.



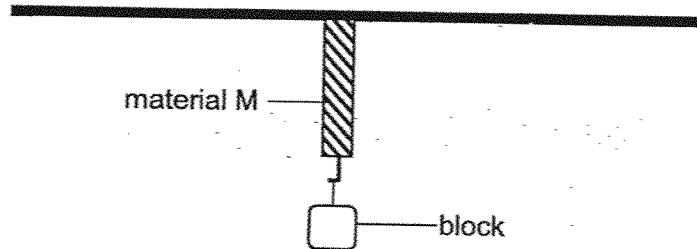
Which material, P, Q or R is most suitable for making part A of the glasses so that the user can see clearly? Give a reason for your answer. [2]

---



---

17. Marcus set up an experiment to test the strength of three materials L, M and N. He hung blocks of the same mass on the rope, one at a time, until it broke.



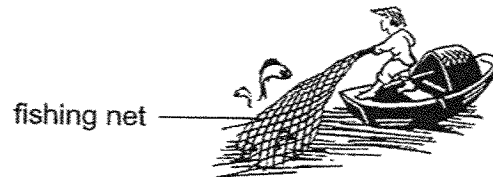
His results are shown in the table below.

Material	L	M	N
Number of blocks hung before breaking	5	9	7

- (a) Based on Marcus' results, arrange the materials, L, M and N, from the strongest to the weakest. [1]

\_\_\_\_\_, \_\_\_\_\_, \_\_\_\_\_  
 (strongest) (weakest)

The fishes caught by the fishermen are very heavy.



- (b) Based on Marcus' results, which material, L, M or N, is most suitable to be used to make the fishing net below? Explain your answer. [2]

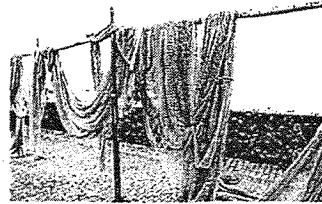
---



---

Question 17 continues on page 15

Fishermen hang their fishing nets on drying racks to dry under the sun as shown in the diagram above.



fishing nets hung on drying racks

- (c) What property of material must the fishing net have to be hung on the rack? [1]
- 

**End of Paper**

[www.sgexam.com](http://www.sgexam.com)

**SCHOOL : ROSYTH PRIMARY SCHOOL**  
**LEVEL : PRIMARY 3**  
**SUBJECT : SCIENCE**  
**TERM : 2025 WEIGHTED ASSESSMENT 2**

Q1	Q2	Q3	Q4	Q5	Q6	Q7	Q8	Q9	Q10
3	1	4	2	4	3	3	1	4	1
Q11	Q12								
3	4								

13a	The tree reproduces by <b>seeds</b> but the fern reproduces by <b>spores</b> .
13b	Tree Z is a <b>young</b> plant. OR, The flowers may not grow all year round.
14a	The amount of food and water <b>decreases</b> .
14b	Living things need <b>food</b> and <b>water</b> to <b>survive</b> .
14c	Living things can <b>reproduce</b> .
14d	<b>height</b> or <b>weight</b>
15a	Both A and B do not have wings.
15b	Animals <b>B</b> and <b>D</b>
15c	Animal <b>C</b>
16a	<b>Flexible, strong</b> , not <b>water proof</b> , does not allow light to pass through / opaque
16b	[C]: Material Q [E]: Q allows <b>light to pass through</b> [R]: so that the user can <b>see through it</b>
17a	M, N, L
17b	[C]: Material M [E]: M holds the <b>most</b> blocks before breaking [R]: The net must <b>hold</b> the weight of the fish without <b>breaking</b>
17c	Property for net to be hung on rack: <b>flexible</b>

[www.sgexam.com](http://www.sgexam.com)