

**Ai Tong School**  
**P3 Science**  
**2025 Term 3 Review**

Name: \_\_\_\_\_ ( )

Class: 3 \_\_\_\_\_

Date: \_\_\_\_\_

Marks: \_\_\_\_\_ /20

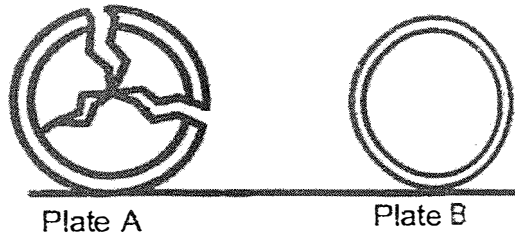
Duration: 30 minutes

Parent's Signature: \_\_\_\_\_

**Section A (12 marks)**

For each question from 1 to 6, four options are given. One of them is the correct answer. Make your choice (1, 2, 3 or 4) and write your answer in the bracket provided.

- 1 Adam dropped two plates, A and B, onto the floor. Plate A broke into pieces but plate B did not.



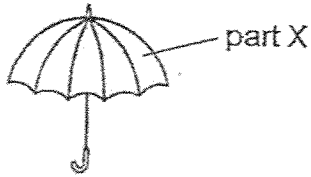
Which one of the following shows correctly what plates A and B are made of?

	Plate A	Plate B
(1)	ceramic	metal
(2)	rubber	ceramic
(3)	metal	plastic
(4)	plastic	rubber

( )

(Go on to the next page)

- 2 Which of the following material is the most suitable for making part X of an umbrella?



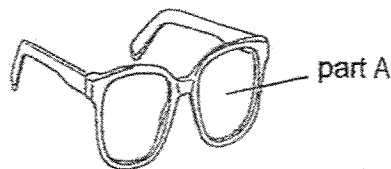
- (1) wood
- (2) glass
- (3) metal
- (4) plastic

( )

- 3 The table below shows the properties of materials W, X, Y and Z. A tick (✓) shows that the material has the property.

Property	Material W	Material X	Material Y	Material Z
Waterproof	✓	✓		✓
Flexible		✓	✓	
Allows light to pass through			✓	✓

Ali wanted to make a pair of reading glasses as shown below.



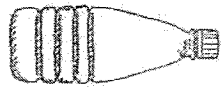
Which material is most suitable to make part A of the reading glasses?

- (1) Material W
- (2) Material X
- (3) Material Y
- (4) Material Z

( )

(Go on to the next page)

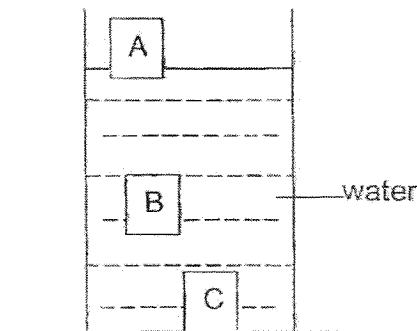
- 4 Jane wanted to find out how the positions of an empty plastic bottle and a marble ball are different when the two objects are placed in the water.



empty plastic bottle  
(with a cap)



marble ball



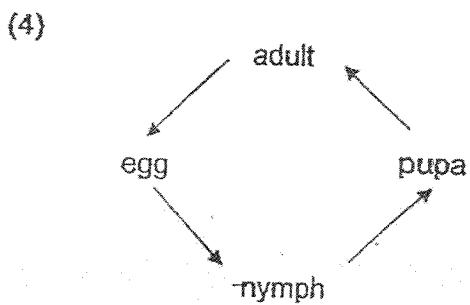
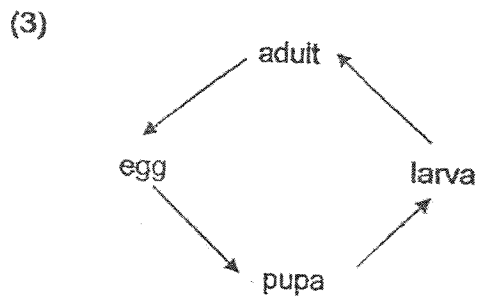
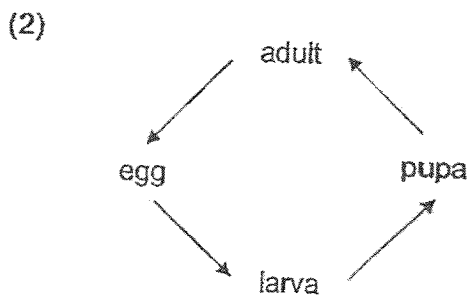
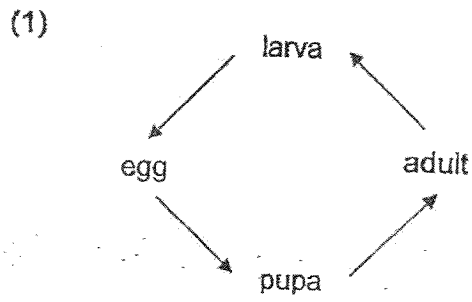
Which positions, A, B or C, are the most likely positions of the empty plastic bottle and the marble ball when placed in the water?

	Empty Plastic Bottle (with a cap)	Marble Ball
(1)	A	B
(2)	C	A
(3)	B	C
(4)	A	C

( )

(Go on to the next page)

5 Which of the following shows the life cycle of a butterfly?



(Go on to the next page)

6 Which of the following statement(s) is/are true about flowering plants?

A The seed is the final stage of the life cycle of a flowering plant.

B All flowering plants have three stages in their life cycles.

C Only the adult flowering plants can have fruit.

- (1) B only
- (2) A and C only
- (3) B and C only
- (4) A, B and C

( )

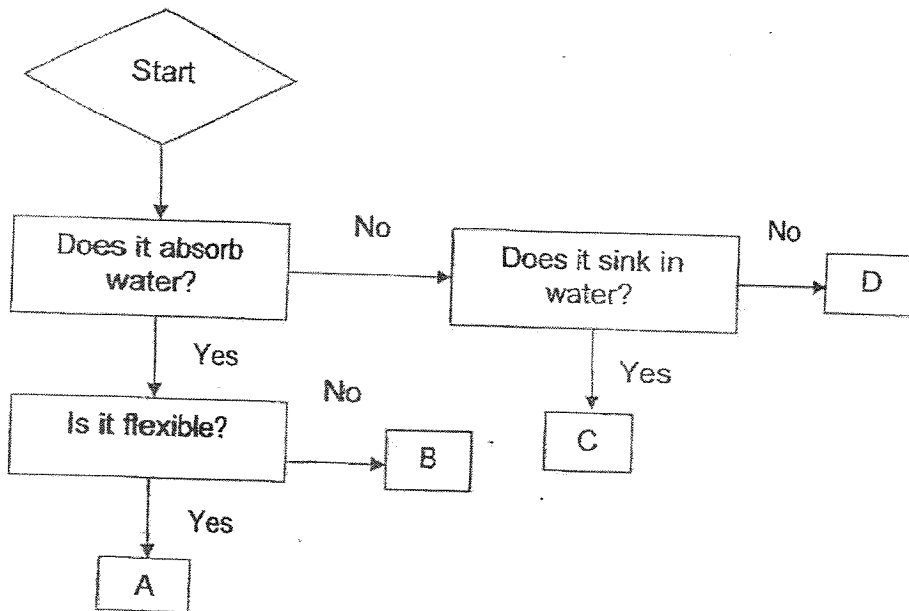
(Go on to the next page)

**Section B (8 marks)**

For questions 7 to 9, write your answers in the spaces provided.

The number of marks available is shown in bracket [ ] at the end of each question or part question.

7 Study the flow chart below.



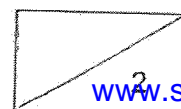
(a) Suggest a suitable material for A. [1]

---

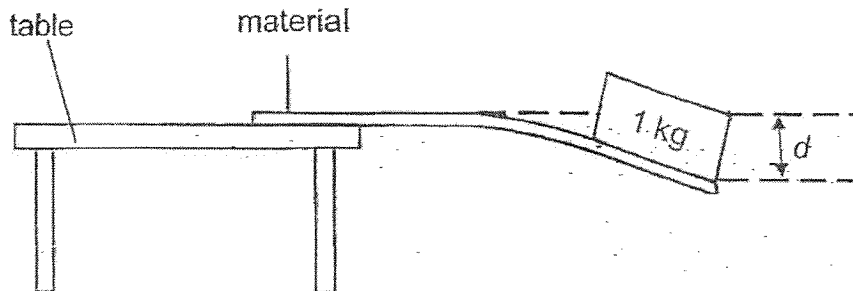
(b) Based on the flowchart above, state one similarity between C and D. [1]

---

(Go on to the next page)



- 8 Amanda wanted to find out which material, A, B or C, is most suitable for making a flexible ruler to measure curved lines. She fixed one end of each material of the same size and thickness, to the edge of the tabletop and added a 1 kg load on the other end of the material as shown below.



She measured the distance,  $d$ , each material bent. She recorded the results in the table below.

Material	Distance each material bent, $d$ (cm)
A	1
B	2
C	less than 1

- (a) Based on the results above, which material is the most flexible?  
Explain your answer.

[1]

---



---

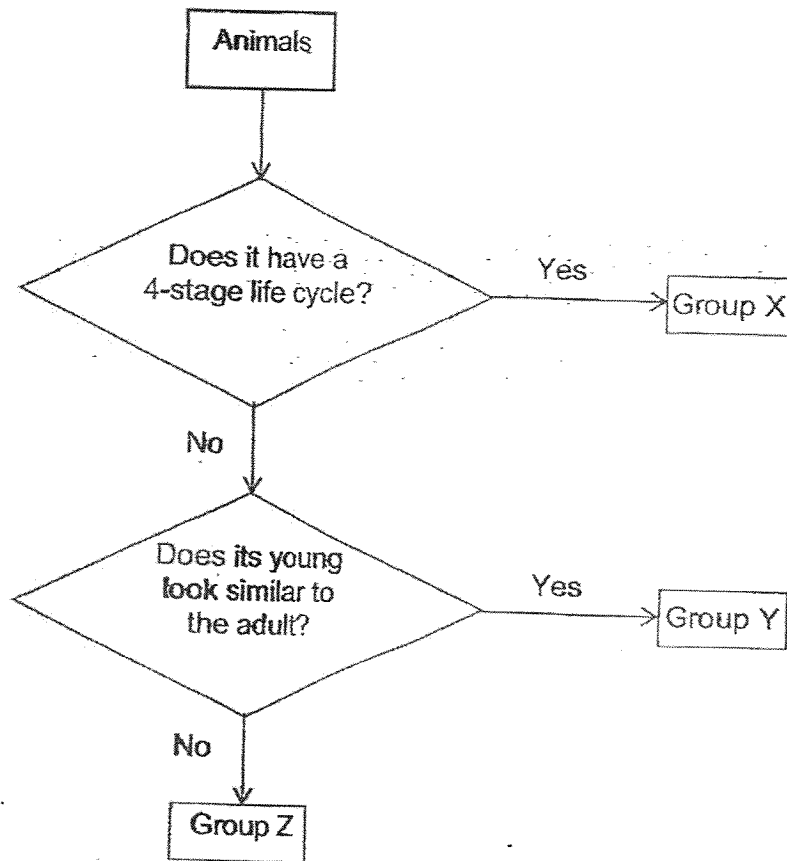
Amanda repeated the experiment above using glass as the material.

- (b) What is the distance that glass will bend when a 1 kg load is placed on it? [1]  
Put a tick ( $\checkmark$ ) for your answer.

<input type="checkbox"/>	0 cm
<input type="checkbox"/>	1 cm
<input type="checkbox"/>	2 cm

(Go on to the next page)

9 Study the flow chart below.



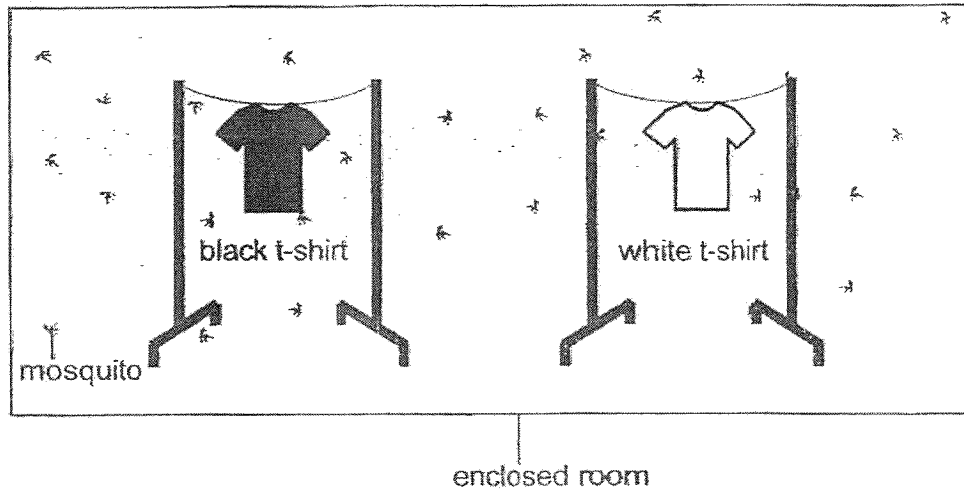
Based on the flow chart above, state the group, X, Y or Z that each of the following animals belongs to. [2]

Animal	Group
chicken	
beetle	
frog	
grasshopper	

(Go on to the next page)



- 10 Mr Koh wanted to find out how the colour of t-shirts affects the number of mosquitoes that get attracted to the t-shirt. The set-up of his experiment is shown below.

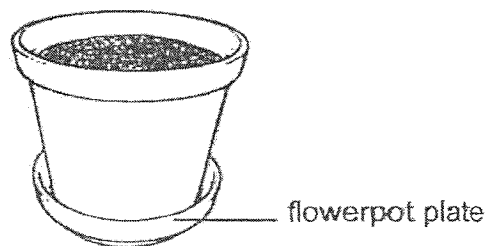


- (a) What is the changed variable of his experiment? [1]

---

---

- (b) Mr Koh always pour away stagnant water in flowerpot plates.



- Explain how pouring away stagnant water reduces the number of mosquitoes at home. [1]

---

---

End of paper

[www.sgexam.com](http://www.sgexam.com)

**SCHOOL : AI TONG PRIMARY SCHOOL**  
**LEVEL : PRIMARY 3**  
**SUBJECT : SCIENCE**  
**TERM : 2025 WEIGHTED ASSESSMENT 3**

Q1	Q2	Q3	Q4	Q5	Q6				
1	4	4	4	2	3				

Q7(a)	Fabric.
Q7(b)	Both C and D do not absorb water.
Q8(a)	Material B is most flexible because the distance Material B bent is the greatest.
Q8(b)	0cm
Q9	Chicken : Group Y Beetle : Group X Frog : Group Z Grasshopper : Group Y
Q10(a)	The colour of the t-shirt.
Q10(b)	Adult mosquitoes lays their eggs in stagnant water but pouring away stagnant water, adult mosquitoes will not lay their eggs in your house and that will reduce the number of mosquitoes.

[www.sgexam.com](http://www.sgexam.com)