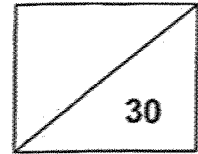




Maha Bodhi School  
2025 Weighted Assessment 1  
Mathematics  
Primary 4



Name: \_\_\_\_\_ ( )

Class: Primary 4 \_\_\_\_\_

Duration: 45 minutes

Date: 8 May 2025

Parent's Signature: \_\_\_\_\_

---

**Section A (10 marks)**

Questions 1 to 5 carry 2 marks each.

For each question, four options are given. One of them is the correct answer.

Make your choice (1, 2, 3 or 4) and write your choice in the brackets ( ) provided.

---

1. Ninety-four thousand, eight hundred and seven, written in numeral is

\_\_\_\_\_

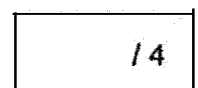
- (1) 90 487
- (2) 94 087
- (3) 94 807
- (4) 94 870

( )

2. Which of the following is a common factor of 4 and 8?

- (1) 32
- (2) 16
- (3) 6
- (4) 4

)



3. In the table below, Mrs Lim recorded the number of books her pupils borrowed for the week. How many books did the pupils borrow on Monday and Tuesday?

Days	Monday	Tuesday	Wednesday	Thursday	Friday
Number of books	6	7	19	13	5

- (1) 50  
 (2) 13  
 (3) 7  
 (4) 6 ( )
4. There were 40 children queuing to enter a room. Every 4th child in the queue received a toy and every 5th child received a sweet. How many children received both a toy and a sweet? -
- (1) 1  
 (2) 2  
 (3) 9  
 (4) 20 ( )
5. If you add 1 to a certain number and round it to the nearest ten, the answer is 1950. If you add 2 to the number and round it to the nearest ten, the answer is 1960. What is the number?

- (1) 1951
- |      |  |
|------|--|
| 1952 |  |
| 1953 |  |
| 1958 |  |
- (2) 1952  
 (3) 1953  
 (4) 1958 ( )

**Section B (10 marks)**

Questions 6 to 10 carry 2 marks each.

Show your working clearly and write your answers in the spaces provided.

For questions which require units, give your answers in the units stated.

---

6. What is the largest number that can be formed using the digits 4, 7, 6, and 1?

Ans: \_\_\_\_\_

7. What is the sum of the first two multiples of 5?

Ans: \_\_\_\_\_

8. The table below shows the number of students in 3 classes.

Class	Number of Students
4 Joy	39
4 Kindness	41
4 Love	40

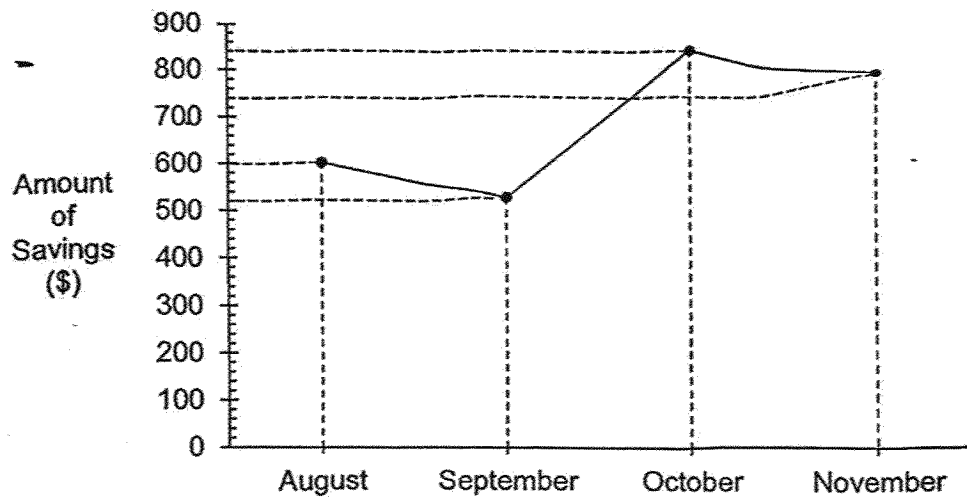
What is the total number of students in all 3 classes?

Ans: \_\_\_\_\_

9. When rounded to the nearest hundred, the number of audience at a theatre was 2600. Write down the largest possible number of audience at the theatre.

Ans: \_\_\_\_\_

10. The line graph below shows Alice's savings from August to November.



- (a) How much did she save in November?

Ans: \$ \_\_\_\_\_ [1]

- (b) Alice earns the same amount of salary every month. In which month did she spend the most?

Ans: \_\_\_\_\_ [1]

**Section C (10 marks)**

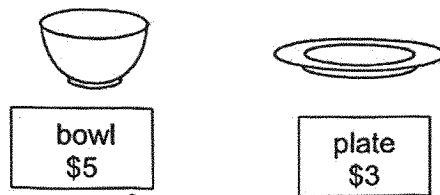
Questions 11 and 12 carry 3 marks each.

Question 13 carries 4 marks.

Show your working clearly and write your answers in the spaces provided. The number of marks available is shown in brackets [ ] at the end of each question or part-question.

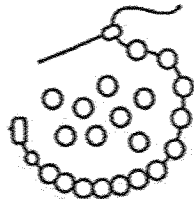
---

11. Sarah sold a total of 20 bowls and plates for \$86.  
Each bowl was sold at \$5 and each plate was sold at \$3.  
How many bowls did Sarah sell?



Ans: \_\_\_\_\_ [3]

12. Ethan had twice as many beads as Sophie. After Ethan used 36 beads for a bracelet, Sophie had twice as many beads as Ethan. How many beads did Sophie have at first?



Ans: \_\_\_\_\_ [3]

13

13. Siti spent a total of \$1400 on a bookshelf, a table and a chair.

The bookshelf cost \$630.

The table cost \$500 more than the chair.

(a) How much did she spend on the table and the chair altogether?

Ans: (a) \_\_\_\_\_ [2]

(b) How much did she spend on the chair?

Ans: (b) \_\_\_\_\_ [2]



*Remember to check your work!*

*~ End of Paper ~*

14

[www.sgexam.com](http://www.sgexam.com)

**SCHOOL : MAHA BODHI SCHOOL**  
**LEVEL : PRIMARY 4**  
**SUBJECT : MATHEMATICS**  
**TERM : 2025 WEIGHTED ASSESSMENT 1**

Q1	3
Q2	4
Q3	2
Q4	2
Q5	3
Q6	7641
Q7	$10 + 5 = 15$
Q8	$41 + 40 + 39 = 120$
Q9	2649
Q10	a) \$740 b) September
Q11	13
Q12	6 units = $36 \times 2 = 72$ 2 units = $72 \div 2 = 3 = 24$
Q13	a) \$770 b) \$135

[www.sgexam.com](http://www.sgexam.com)