



Nan Hua Primary School
Primary 4 Mathematics
Term 2 Weighted Assessment 2025

Marks	
Section A:	/8
Section B:	/8
Section C:	/9
Total:	25

Name: _____ ()

Class: Primary 4M_____

Date: 7 May 2025

Duration: 40 min

Parent's Signature

INSTRUCTIONS TO CANDIDATES

1. Write your name and index number in the space provided.
2. Do not turn over the page until you are told to do so.
3. Follow all instructions carefully.
4. Answer all questions.
5. Use dark blue or black ball point pen to write your answers in the space provided for each question.
6. Do not use correction tape/ fluid/ highlighter.

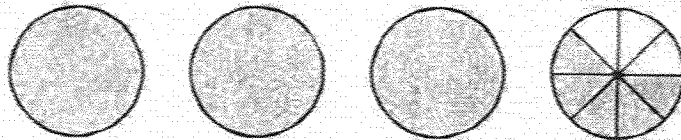
This booklet consists of 10 printed pages.

Section A

Questions 1 to 4 carry 1 mark each. Questions 5 to 6 carry 2 marks each.
For each question, four options are given. One of them is the correct answer.
Make your choice (1, 2, 3 or 4) and write your answer in the brackets.

(8 marks)

- 1 Express the shaded part of the figure as an improper fraction.



(1) $\frac{27}{8}$

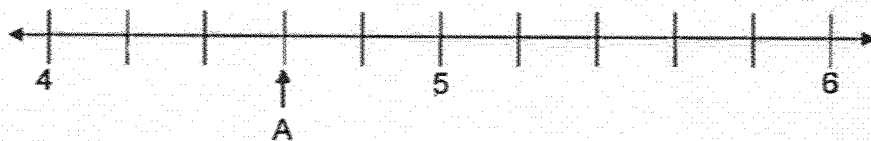
(2) $\frac{29}{8}$

(3) $3\frac{3}{8}$

(4) $3\frac{5}{8}$

()

- 2 What is the mixed number represented by the letter A on the number line?



(1) $\frac{8}{5}$

(2) $\frac{23}{5}$

(3) $4\frac{3}{5}$

(4) $4\frac{4}{6}$

3

3 Arrange the fractions in increasing order.

$$\boxed{\frac{15}{7}} \quad \boxed{1\frac{4}{9}} \quad \boxed{\frac{5}{3}}$$

- (1) $1\frac{4}{9}$, $\frac{15}{7}$, $\frac{5}{3}$
- (2) $1\frac{4}{9}$, $\frac{5}{3}$, $\frac{15}{7}$
- (3) $\frac{15}{7}$, $\frac{5}{3}$, $1\frac{4}{9}$
- (4) $\frac{5}{3}$, $\frac{15}{7}$, $1\frac{4}{9}$

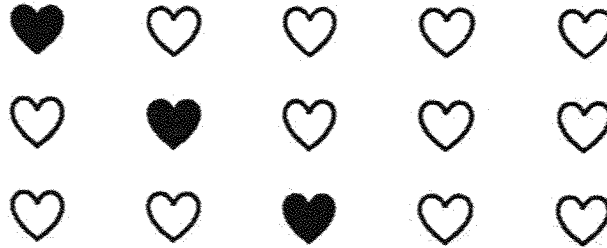
4 There are a total of 40 students in Class 4A. The table shows the number of students who wear glasses in Class 4A.

	Boys	Girls
Number of students who wear glasses	12	<input style="border: 1px solid black; width: 40px; height: 20px;" type="text" value="?"/>
Number of students who do not wear glasses	?	11
Total	21	?

What is the number of girls in 4A who wear glasses?

- (1) 8
- (2) 9
- (3) 10
- (4) 19

- 5 How many more hearts need to be shaded so that $\frac{2}{3}$ of the set of hearts is shaded?



- (1) 7
(2) 2
(3) 3
(4) 10
- 6 Ms Lim is planning for a class party. She wants to buy enough pizza such that each of her 35 students can have $\frac{1}{6}$ of a pizza.

The shop only sells whole pizza.

What is the least number of whole pizza Ms Lim need to buy?

- (1) 5
(2) 6
(3) 7
(4) 4

Section B

Questions 7 to 10 carry 2 marks each. Write your answers in the spaces provided.
For questions which require units, give your answers in the units stated. (8 marks)

7 (a) Express $\frac{22}{4}$ as a mixed number in its simplest form.

Ans: (a) _____

(b) $\frac{2}{9}$ of 63 = _____

Ans: (b) _____

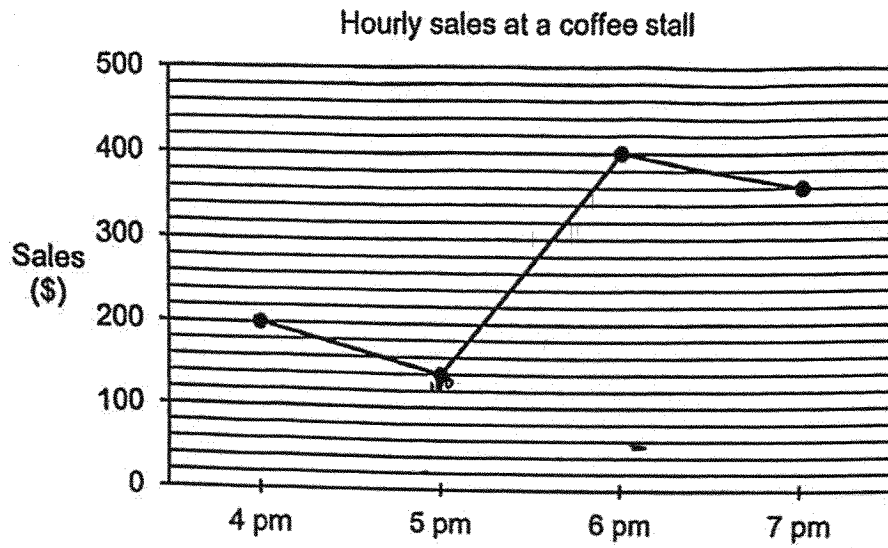
8 Mdm Siti had 5 ℓ of orange juice.
She drank $\frac{3}{8}$ ℓ of orange juice.
How much orange juice did she have left?

Ans: _____ ℓ

Please do not write in the margin



9 The line graph shows the hourly sales at a coffee stall on a Monday over 3 hours.



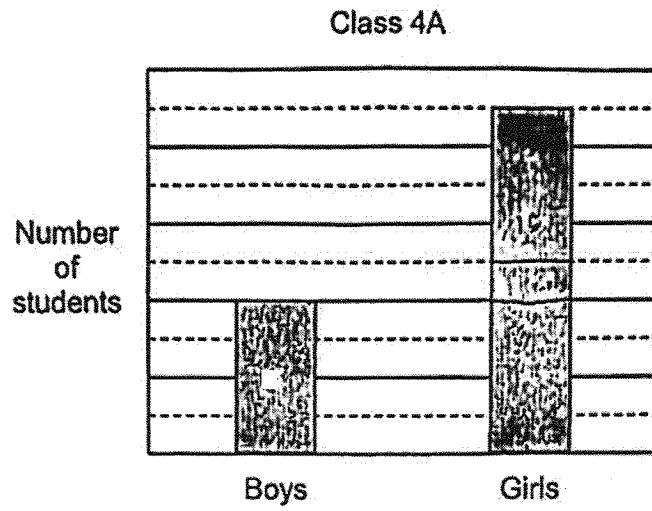
What is the total amount of sales from 5 pm to 7 pm?

Please do not write in the margin

Ans: \$ _____



10 The bar graph below shows the number of boys and girls in Class 4A.



There are 15 more girls than boys in Class 4A.
What is the total number of students in Class 4A?

Please do not write in the margin

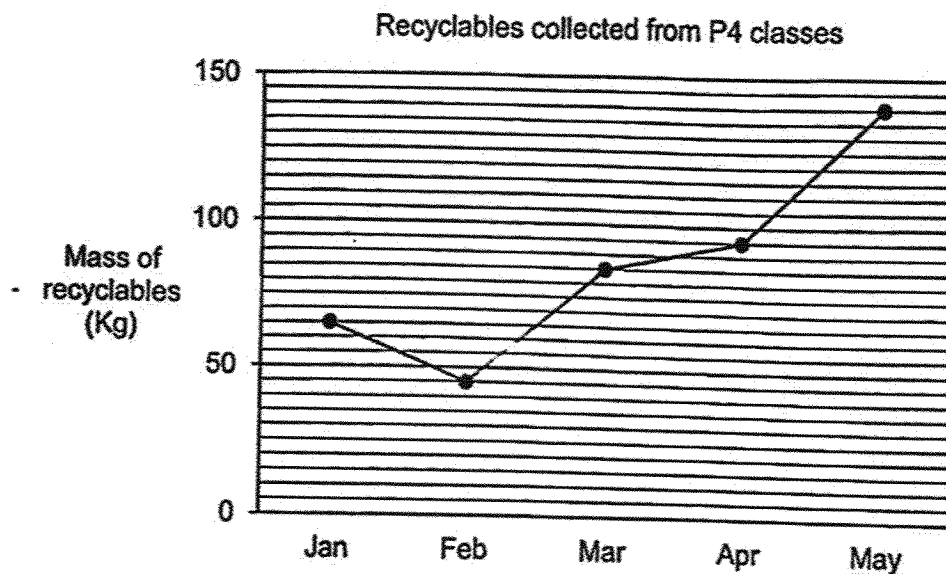
Ans: _____



Section C

For questions 11 to 13, show your working clearly and write your answers in the spaces provided. The number of marks available is shown in brackets [] at the end of each question or part-question. (9 marks)

- 11 The line graph shows the mass of recyclables collected from Primary 4 classes over 5 months.



- (a) Which month had the least mass of recyclables collected?

Ans: (a) _____ [1]

- (b) During which 1-month period was the increase in the mass of recyclables collected the greatest?

Ans: (b) _____ to _____ [2]

Please do not write in the margin.



12 Alice jogs $\frac{3}{4}$ km at a park. She walks $\frac{5}{12}$ km less than the distance she jogs.

What is the total distance she jogs and walks?

Please do not write in the margin

Ans: _____ [3]



- 13 A box is filled with some balls. $\frac{4}{11}$ of the balls are yellow and the rest of the balls are red. There are 42 more red balls than yellow balls. How many balls are there in the box altogether?

Please do not write in the margin

Ans: _____ [3]



End of Paper

SCHOOL : NAN HUA PRIMARY SCHOOL
LEVEL : PRIMARY 4
SUBJECT : MATHEMATICS
TERM : 2025 WEIGHTED ASSESSMENT 2

Q1	Q2	Q3	Q4	Q5	Q6				
2	3	2	1	1	2				

Q7	<p>a) $\frac{22}{4} = 5\frac{2}{4} = 5\frac{1}{2}$</p> <p>b) $63 \div 9 = 7$</p> <p>$7 \times 2 = 14$</p>
Q8	$4\frac{8}{8} - \frac{3}{8} = 4\frac{5}{8}$
Q9	<p>5 pm – \$140</p> <p>6 pm – \$400</p> <p>7 pm – \$360</p> <p>Total = \$900</p>
Q10	<p>$12 + 15 = 27$ girls</p> <p>$27 + 12 = 39$ students</p>
Q11	<p>a) February</p> <p>b) April to May</p>
Q12	<p>Alice walks: $\frac{3}{4} - \frac{5}{12} = \frac{9}{12} - \frac{5}{12} = \frac{4}{12}$ km</p> <p>Jogs and walks: $\frac{3}{4} + \frac{4}{12} = \frac{9}{12} + \frac{4}{12} = \frac{13}{12} = 1\frac{1}{12}$ km</p>
Q13	<p>$7 - 4 = 3$ units</p> <p>3 units = 42</p> <p>1 unit = 14</p> <p>$14 \times 11 = 154$</p>

www.sgexam.com