

Catholic High School (Primary)
Primary 4 Science 2025
Weighted Assessment 1

Name: _____ ()

Class: Pri. 4 - _____

MARKS	20
-------	----

Date: 27 February 2025

Parent's Signature: _____

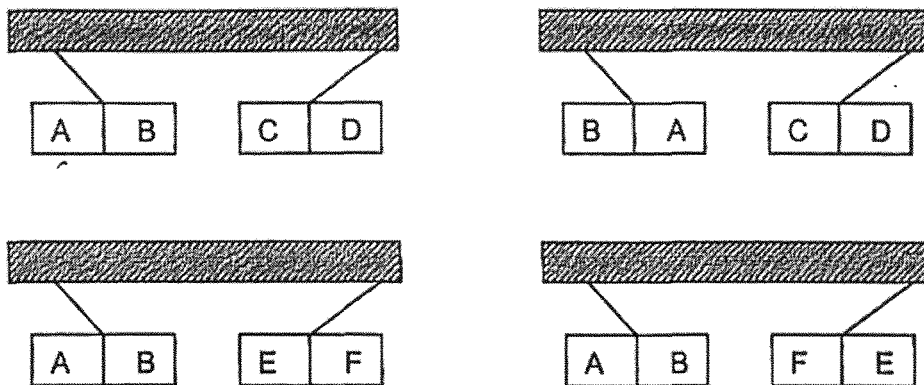
Booklet A (6 × 2 marks)

For each question from 1 to 6, four options are given. One of them is the correct answer. Make your choice (1, 2, 3 or 4). Write its correct number in the brackets provided.

(12 marks)

- 1 Eric wanted to find out which metal bars, AB, CD and EF, are magnets. He hung each bar from a string and brought them near each other.

His results are as shown.

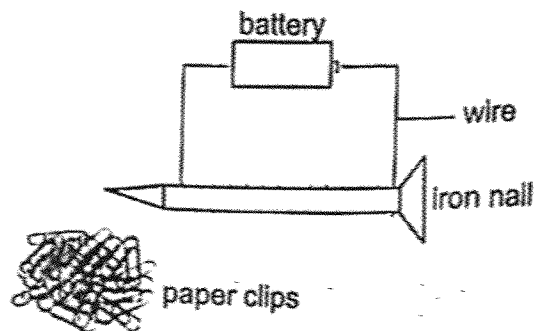


Which of the following is correct?

	AB	CD	EF
(1)	not a magnet	magnet	magnet
(2)	not a magnet	not a magnet	magnet
(3)	magnet	not a magnet	magnet
(4)	magnet	magnet	magnet

()

- 2 Gwen made an electromagnet as shown.



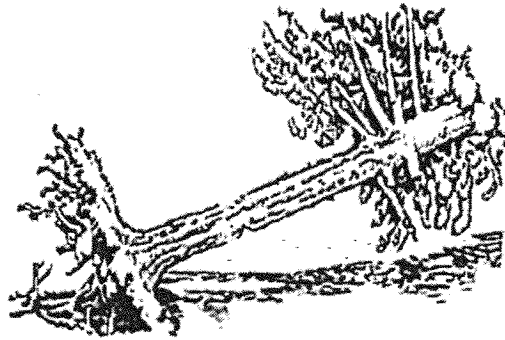
She changed the number of batteries in the set-up and counted the number of paper clips attracted by the iron nail. The results are as shown.

	Set-up			
	E	F	G	H
Number of batteries	1	2	3	4
Number of paper clips attracted by the iron nail	2	5	10	13

Based on the results, which statements are correct?

- A The iron nail in set-up H has the strongest magnetism.
 - B The strength of the electromagnet depends on the number of batteries.
 - C The iron nail in set-up G is a stronger electromagnet than the iron nail in set-up F.
 - D The strength of the electromagnet depends on the number of coils around the iron nail.
- (1) A, B and C only
 (2) A, B and D only
 (3) A, C and D only
 (4) B, C and D only

3 The diagram shows an uprooted tree after a thunderstorm.

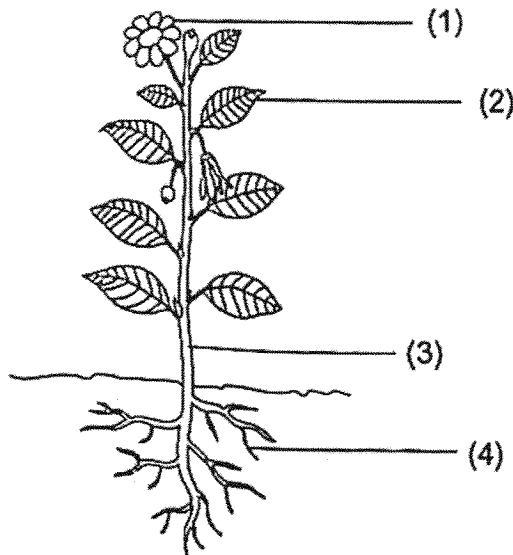


Why did the uprooted tree die after a month?

- (1) The trunk could not hold the tree upright.
- (2) The leaves of the tree could not make food after a week.
- (3) The branches of the tree could not spread out the leaves to trap sunlight.
- (4) The roots of the tree could not take in water and mineral salts from the soil.

()

4 Which part, (1), (2), (3) or (4), supports the plant upright?



()

5 The functions of the four body systems, A, B, C and D, are as listed.

System A	supports the body and gives its shape
System B	involves in the exchange of gases between the body and our surroundings
System C	transports digested food, water and oxygen to different parts of the body
System D	breaks down food into simpler substances for the body to absorb

Which of the following correctly represents systems A, B, C and D?

	A	B	C	D
(1)	digestive	circulatory	respiratory	skeletal
(2)	skeletal	respiratory	circulatory	digestive
(3)	digestive	skeletal	respiratory	circulatory
(4)	skeletal	circulatory	digestive	respiratory

6 Which of the following is correct?

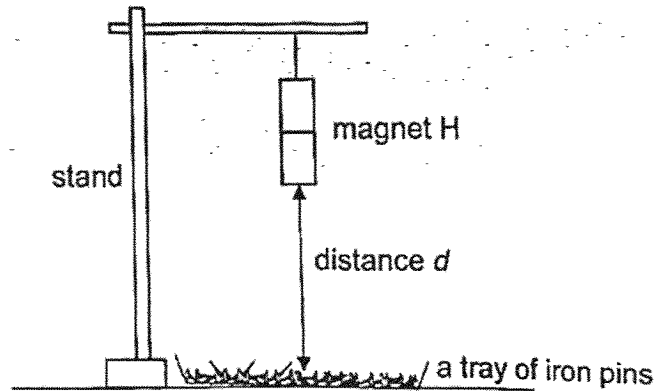
	Organ involved in digestion of food	Organ involved in absorption of food
(1)	mouth	large intestine
(2)	stomach	large intestine
(3)	small intestine	small intestine
(4)	large intestine	small intestine

Booklet B (8 marks)

For questions 7 to 9, write your answers in this booklet.

The number of marks available is shown in brackets [] at the end of each question or part question.

- 7 Mandy set up an experiment as shown.



She hung magnet H at different distances, d , from the tray of iron pins and recorded the number of iron pins attracted.

The table shows her results.

Distance d (cm)	2	4	6	8
Number of iron pins attracted	15	12	8	5

- (a) Based on the results, state how the number of iron pins attracted by magnet H is affected by distance d . [1]

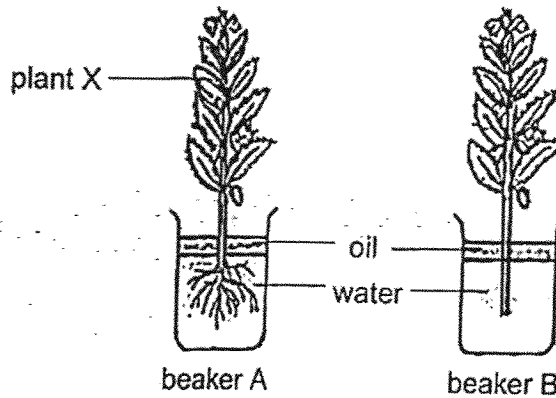
- (b) Mandy decided to change the tray of iron pins to copper pins. She noticed that magnet H did not attract any copper pins. Give a reason. [1]

(Go on to the next page)

SCORE	2
-------	---

8 Jean set up an experiment as shown.

She placed plant X in beaker A. For beaker B, she removed all the roots of a similar plant X.



(a) State what Jean was trying to find out in the experiment.

[1]

(b) Tick (✓) the variable(s) that Jean should keep the same to ensure a fair test.

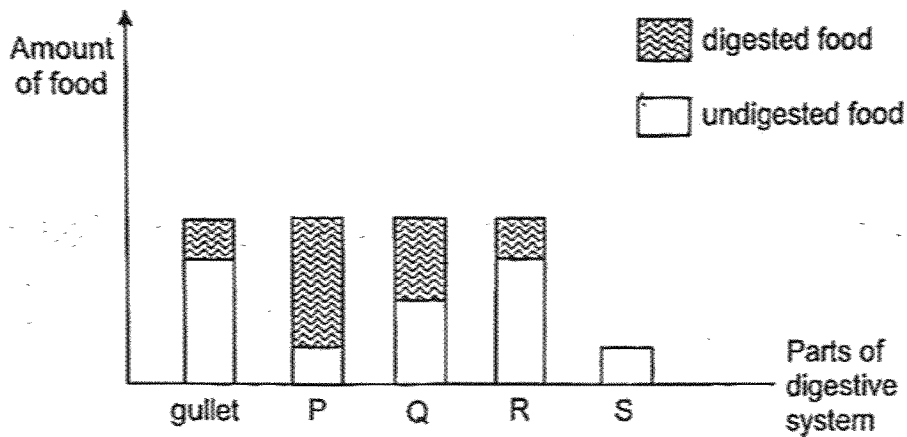
[1]

Variables	Tick (✓)
amount of water	
presence of roots	
size of beaker	

(Go on to the next page)

SCORE	2
-------	---

- 9 The diagram shows the amount of digested and undigested food found in different parts of the digestive system as food passes through them.



- (a) Name the parts represented by P, Q, R and S. [2]

Parts of digestive system	Name the parts
P	
Q	
R	
S	

- (b) Name the part of the digestive system in which is food is being cut into smaller pieces. [1]

- (c) Explain how the chewing of food into smaller pieces help in digestion. [1]

End of Paper

SCORE	4
-------	---

SCHOOL : CATHOLIC HIGH SCHOOL
LEVEL : PRIMARY 4
SUBJECT : SCIENCE
TERM : 2025 WEIGHTED ASSESSMENT 1

Q1	1
Q2	1
Q3	4
Q4	3
Q5	2
Q6	3
Q7	a) The longer distance d is the lesser the number of iron pins attracted. b) Copper is a non-magnetic material, therefore it cannot be attracted.
Q8	a) She wants to find out if roots absorb water for the plant. b) amount of water size of beaker
Q9	a) P: small intestine Q: stomach R: mouth S: large intestine b) The mouth c) Chewing of food increases the surface area of the food in contact with the digestive juices hence digestion is faster.

www.sgexam.com