

**Tao Nan School**  
**Primary 4 Science**  
**2025 Weighted Assessment 1**

Section A	12
Section B	8
Total	20

Name: \_\_\_\_\_ (    )    Date: \_\_\_\_\_

Class: \_\_\_\_\_    Parent's signature: \_\_\_\_\_

**Section A (6 x 2 marks)**

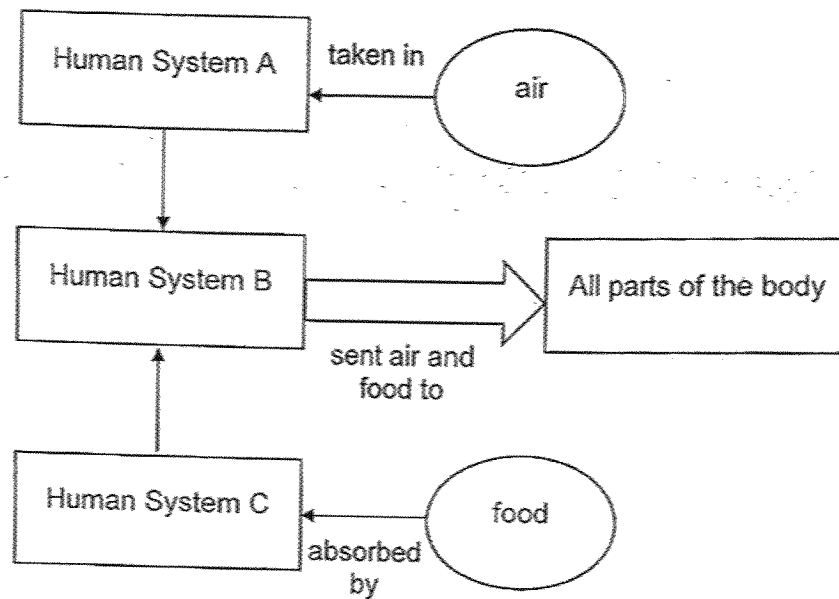
For each question from 1 to 6, four options are given. One of them is the correct answer. Make your choice (1, 2, 3 or 4) and write it in the brackets provided.

(12 marks)

- 
1. The digestive system works together with another human system to push food from the mouth to the stomach. Which of the following systems plays that role?
- (1) Skeletal system
  - (2) Muscular system
  - (3) Circulatory system
  - (4) Respiratory system

(    )

2. The diagram below shows three different human systems with different functions.



Identify Human Systems A, B and C.

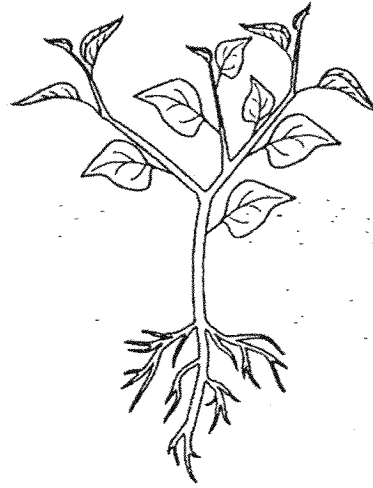
	Human System A	Human System B	Human System C
(1)	Respiratory system	Muscular system	Digestive system
(2)	Circulatory system	Digestive system	Respiratory system
(3)	Respiratory system	Circulatory system	Digestive system
(4)	Skeletal system	Muscular system	Digestive system

( )

3. Study the two plants below.



Plant G



Plant H

Which of the following statements is definitely true?

- (1) Plant H grows slower than Plant G.
- (2) Plant H has a stronger stem than Plant G.
- (3) Plant G needs more sunlight than Plant H.
- (4) Plant G can absorb more water than Plant H.

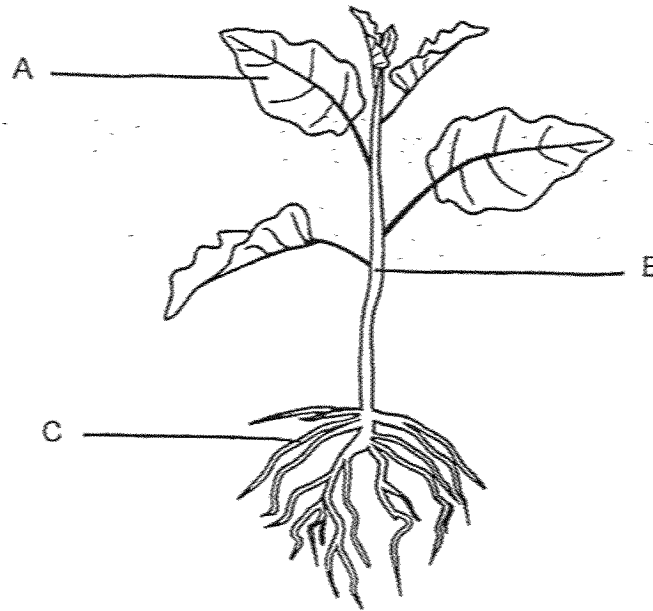
( )

4. Which of the following does not take place in the mouth?

- (1) The tongue rolls food into balls.
- (2) The teeth chew and digest food.
- (3) The saliva wets the food and helps in swallowing.
- (4) The tongue pushes food towards the gullet for swallowing.

( )

5. The diagram below shows a flowering plant.

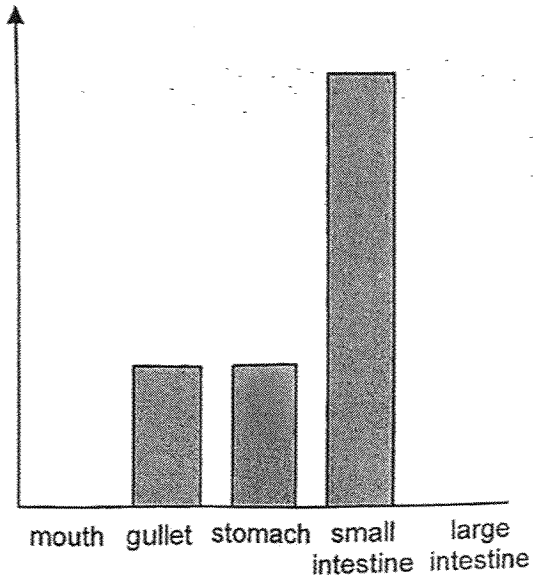


Which of the following are the functions of the labelled plant parts?

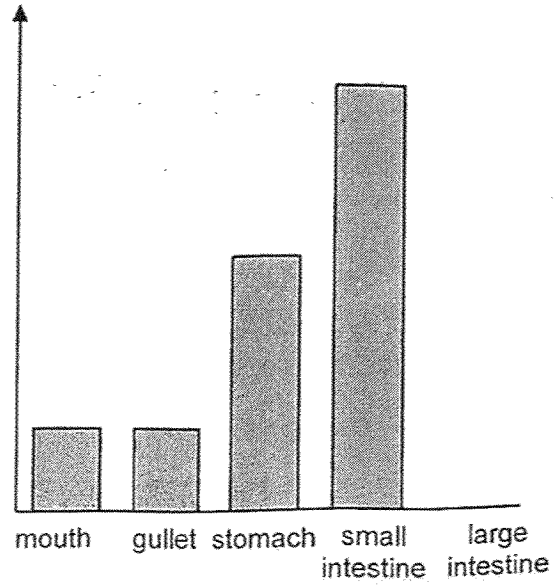
Functions				
	Makes food for the plant	Holds the plant upright	Anchors the plant firmly to the ground	Exchange of gases
(1)	A	C	B	A
(2)	B	A	C	B
(3)	C	B	C	A
(4)	A	B	C	A

6. Which diagram shows the amount of digested food when food enters the organs in a human digestive system?

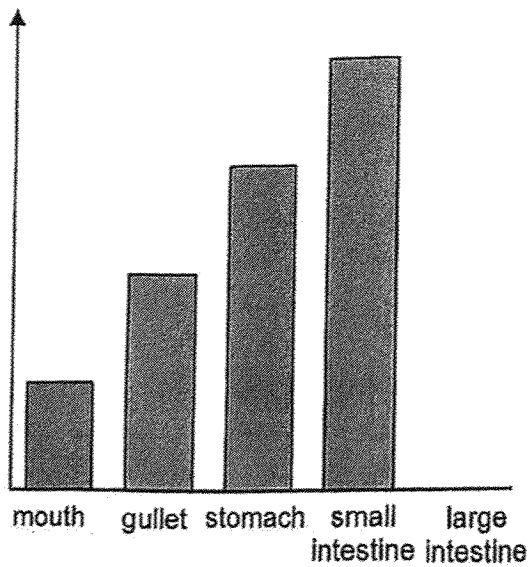
(1)  
Amount of  
Digested Food



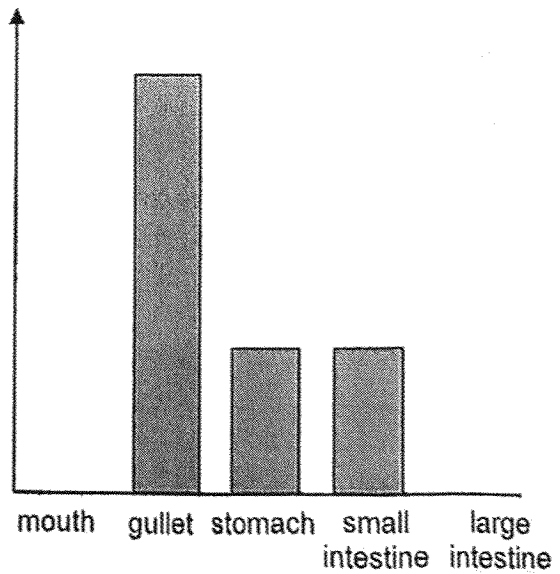
(2)  
Amount of  
Digested Food



(3)  
Amount of  
Digested Food



(4)  
Amount of  
Digested Food



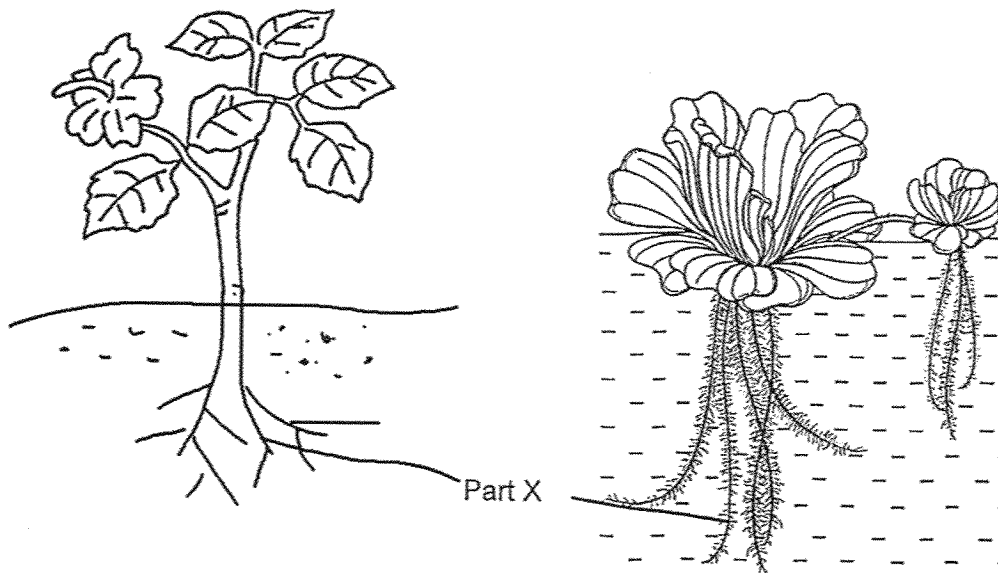
**Section B (8 marks)**

For questions 7 to 9, write your answers clearly.

The number of marks available is shown in brackets [ ] at the end of each question or part question.

(8 marks)

7. The diagram below shows two plants.



(a) Name Part X.

[1]

\_\_\_\_\_

(b) State one similar function of Part X of both plants.

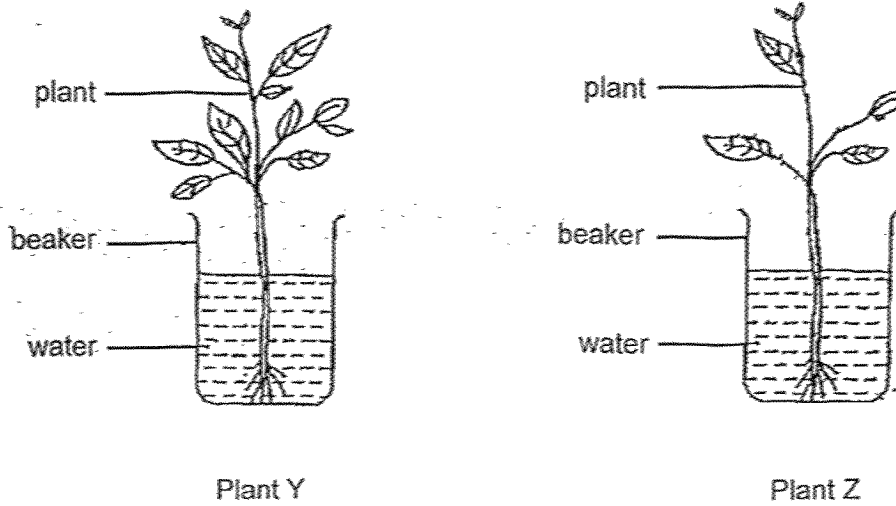
[1]

\_\_\_\_\_

\_\_\_\_\_

Score	1	2
-------	---	---

8. Tom set up an experiment with two similar plants as shown below. He removed several leaves from Plant Z.



Tom recorded the height of the plants at regular intervals for 30 days.

Day		0	10	20	30
Height of the plant (cm)	Plant Y	10	15	20	25
	Plant Z	10	12	14	16

(a) What is the aim of the experiment? [1]

---



---

(b) Explain how did the removal of the leaves of Plant Z affect its growth? [2]

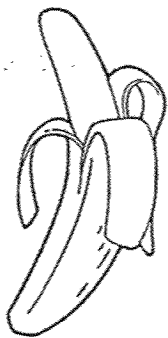
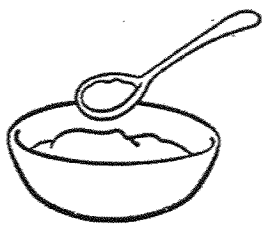

---



---

Score	2
	3

9. Mrs Tan was preparing bananas as a snack for her three children, Dan, Nate and Charles, of different ages.

	Dan	Nate	Charles
	10 years old	6 months old	1 year old
Types of banana snack	 Whole banana	 Mashed banana	 Sliced banana

- (a) Explain why Dan's snack does not need to be mashed or sliced? [1]

---



---

- (b) If Mrs Tan wants Dan to be able to digest the snack more quickly, how should she prepare the snack? Explain why. [2]

---



---

End of Paper

Score	3
-------	---

**SCHOOL : TAO NAN SCHOOL**  
**LEVEL : PRIMARY 4**  
**SUBJECT : SCIENCE**  
**TERM : 2025 WEIGHTED ASSESSMENT 1**

Q1	2
Q2	3
Q3	2
Q4	2
Q5	4
Q6	1
Q7	a) Part X is the roots. b) Part X of both plants absorb water and mineral salts.
Q8	a) To find if the amount of leaves affect the growth of the plant. b) Plant Z traps less sunlight and make less food so Plant Z will grow slower than Plant Y.
Q9	a) Dan has teeth to chew the banana. b) Mrs Tan should banana into smaller pieces. When the banana is cut into smaller pieces, the surface area increases so the exposure to digestive juices also increases and the speed of digested is faster.

[www.sgexam.com](http://www.sgexam.com)