



Nan Hua Primary School  
 Primary 5 Science  
 Term 2 Weighted Assessment 2025

Marks	
Section A:	/ 10
Section B:	/ 10
<b>Total:</b>	<b>/ 20</b>

Name: \_\_\_\_\_ (      )

Class: Primary 5S \_\_\_\_\_

Date: \_\_\_\_\_

Duration: 30 minutes

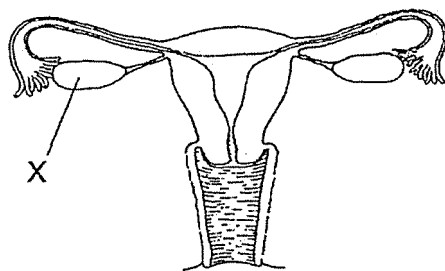
\_\_\_\_\_  
 Parent's Signature

Answer **all** questions

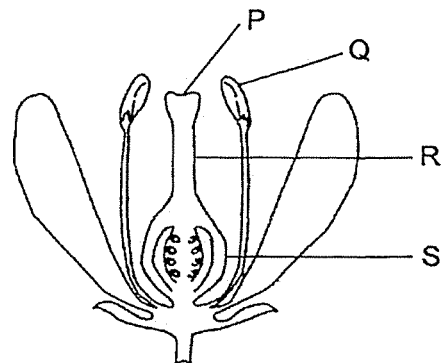
**Section A: (5 x 2 marks = 10 marks)**

For each question from 1 to 5, four options are given. One of them is the correct answer. Make your choice (1, 2, 3 or 4) and write your answer in the brackets provided.

1 The diagrams below show the reproductive systems of a human and a plant.



human



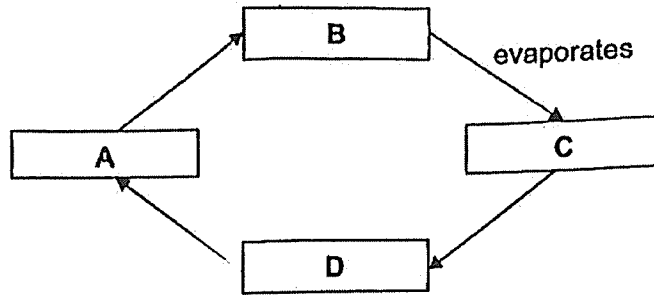
plant

Which part in the reproductive system of the plant has a similar function as part X in the reproductive system of the human?

- (1) P
- (2) Q
- (3) R
- (4) S

(      )

2 The diagram below represents the water cycle.



	A	B	C	D
(1)	rain	cloud	water	water vapour
(2)	rain	water	water vapour	cloud
(3)	cloud	water	water vapour	rain
(4)	water vapour	cloud	rain	water

3 Ravi placed two identical cups near a window where there was sunlight. He filled one cup completely with liquid S and filled the other cup completely with liquid T. The next day, he observed that the cups were no longer full.

What can Ravi conclude from his observation?

- A Liquid T evaporates faster than liquid S.
- B Both liquids evaporate.
- C Both liquids need sunlight for evaporation.
- D Both liquids will evaporate faster if there is wind.

- (1) B only
- (2) B and C only
- (3) C and D only
- (4) A, B, C and D

- 4 The table shows the freezing point and boiling point of two substances, X and Y.

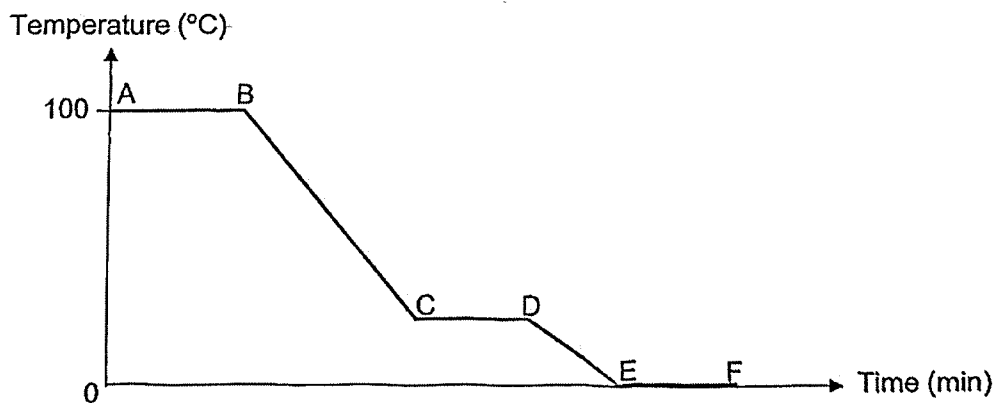
Substance	Freezing point (°C)	Boiling point (°C)
X	63	125
Y	145	210

Which of the following shows the correct state of substances X and Y at 120°C?

State of substances at 120°C	
X	Y
(1) solid	solid
(2) solid	liquid
(3) liquid	solid
(4) liquid	liquid

( )

- 5 The graph below shows the change in temperature of a container of water over some time.



Based on the graph above, which one of the following statements is correct?

- (1) The water was losing heat at Point E.
  - (2) There was no evaporation between BC.
  - (3) The water was changing from liquid to solid at CD.
  - (4) The water did not lose heat or gain heat between AB.
- ( )

**Section B: Structured questions (10 marks)**

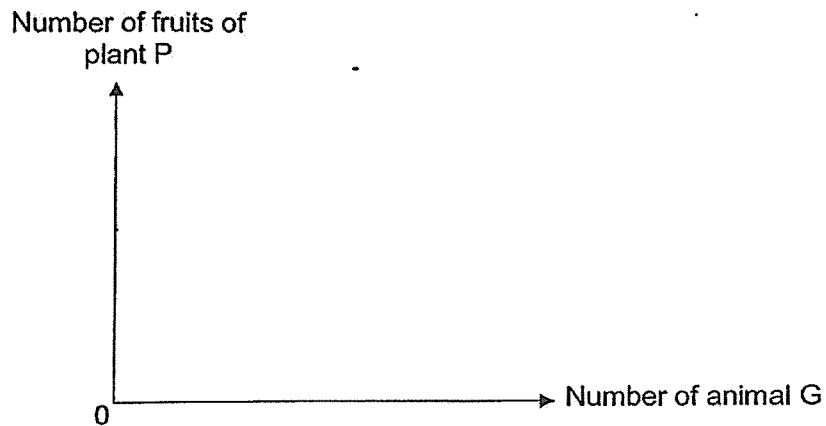
For questions 6 to 8, write your answers in the space provided. The number of marks available is shown in brackets [ ] at the end of each question or part question.

6 In a garden, there are only plant P, animal G and animal H. Animal G only feeds on the nectar of the flowers of plant P. Animal H only eats the fruits of plant P.

(a) State a possible characteristic of the fruit of plant P. [1]

---

(b) In the graph below, draw a line to show how the number of animal G affects the number of fruits of plant P. [1]



(c) Plant P covered a wider area in the garden after some time. Explain why. [1]

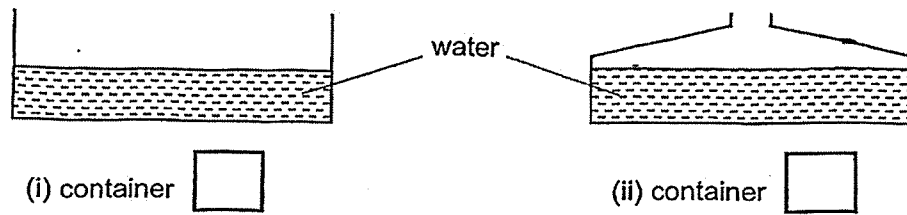
---

SCORE	
-------	---

- 7 Billy poured 80 ml of water into two containers, J and K. He left them side by side on the kitchen table. He measured the amount of water left in the containers after a few hours. The results are as shown in the table below.

	Volume of water at the start (ml)	Volume of water in the end (ml)
Container J	80	55
Container K	80	32

- (a) Based on the results above, label the containers below by writing J or K in the boxes provided. [1]



- (b) Explain your answer in (a). [1]

---



---

- (c) Explain why placing containers J and K side by side at the same location makes Billy's investigation a fair one. [1]

---



---

SCORE	3
-------	---

(Go on to the next page)

8 (a) State what boiling means.

[1]

---

---

Aisha brushed her teeth in front of a mirror as shown in Diagram 1. After she took a hot shower, the mirror became foggy as shown in Diagram 2.

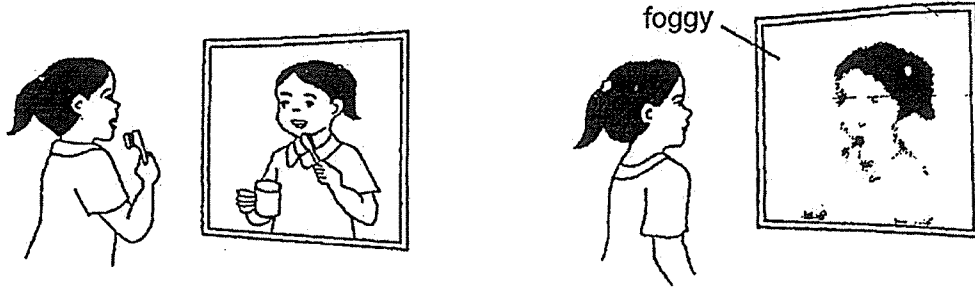


Diagram 1

Diagram 2

(b) Explain how the mirror became foggy.

[2]

---

---

---

---

(c) Aisha opened the bathroom door. She realised that the mirror became clear again on its own after some time. Give a reason for this.

[1]

---

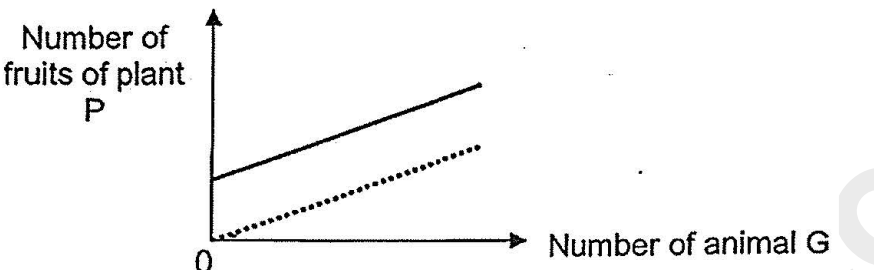
---

End of Paper

SCORE	4
-------	---

**SCHOOL : NAN HUA PRIMARY SCHOOL**  
**LEVEL : PRIMARY 5**  
**SUBJECT : SCIENCE**  
**TERM : 2025 WEIGHTED ASSESSMENT 2**

Q1	Q2	Q3	Q4	Q5					
4	2	1	3	1					

6a	Fleshy OR juicy
6b	
6c	<p>After animal H eats the fruits, it throws/spits the seeds in other parts of garden and the seeds germinated</p> <p>OR</p> <p>When animal H eats the fruits / swallows the seeds which are later passed out in their dropping in other parts of the garden and the seeds germinated</p>
7a	<p>(i) K</p> <p>(ii) J</p>
7b	<p>Container K's opening is bigger, so more water vapour can escape.</p> <p>Water in container K has a bigger exposed surface area than water in container J rate of evaporation of water in K is higher.</p>
7c	<p>Ensure that temperature of surrounding is the same.</p> <p>OR</p> <p>Ensure that speed of wind is the same.</p>
8a	<p>Boiling is a process where liquid gains heat and changes into gas at a fixed temperature.</p>
8b	<p>Warm water (from hot shower) evaporates into water vapour.</p> <p>OR</p>

	<p>Water vapour in the air gains heat from hot water.</p> <p>Then warm water vapour touches the cooler mirror, lost heat and condense into water droplets</p>
8c	<p>Water gained heat from the surroundings and evaporated.</p>

[www.sgexam.com](http://www.sgexam.com)